

# RTC-1200

---

Rugged Tablet Computer

User's Manual 6<sup>th</sup> Ed

## Copyright Notice

---

This document is copyrighted, 2021. All rights are reserved. The original manufacturer reserves the right to make improvements to the products described in this manual at any time without notice.

No part of this manual may be reproduced, copied, translated, or transmitted in any form or by any means without the prior written permission of the original manufacturer. Information provided in this manual is intended to be accurate and reliable. However, the original manufacturer assumes no responsibility for its use, or for any infringements upon the rights of third parties that may result from its use.

The material in this document is for product information only and is subject to change without notice. While reasonable efforts have been made in the preparation of this document to assure its accuracy, AAEMON assumes no liabilities resulting from errors or omissions in this document, or from the use of the information contained herein.

AAEMON reserves the right to make changes in the product design without notice to its users.

## Acknowledgement

---

All other products' name or trademarks are properties of their respective owners.

- Intel®, Celeron® are registered trademarks of Intel Corporation
- Core™ i7/i5/i3 is a registered trademark of Intel Corporation
- Windows™, Windows™ 10, Windows™ 7 and the Windows logo are registered trademarks of Microsoft Corp.

All other product names or trademarks are properties of their respective owners. The publisher of this document does not imply nor intent to imply ownership of trademarked properties used in this document but omitted from the list above.

## Packing List

---

Before setting up your product, please make sure the following items have been shipped:

Item	Quantity
● RTC-1200	1
● Power Adapter	1

If any of these items are missing or damaged, please contact your distributor or sales representative immediately.

## About this Document

---

This User's Manual contains all the essential information, such as detailed descriptions and explanations on the product's hardware and software features (if any), its specifications, dimensions, jumper/connector settings/definitions, and driver installation instructions (if any), to facilitate users in setting up their product.

Users may refer to the product page at [AAEON.com](http://AAEON.com) for the latest version of this document.

**Note:** This document is intended for use with the RTC-1200. For RTC-1200SK user manual, please contact your AAEON sales representative to obtain a copy.

## Safety Precautions

---

Please read the following safety instructions carefully. It is advised that you keep this manual for future references

1. All cautions and warnings on the device should be noted.
2. Make sure the power source matches the power rating of the device.
3. Position the power cord so that people cannot step on it. Do not place anything over the power cord.
4. Always completely disconnect the power before working on the system's hardware.
5. No connections should be made when the system is powered as a sudden rush of power may damage sensitive electronic components.
6. If the device is not to be used for a long time, disconnect it from the power supply to avoid damage by transient over-voltage.
7. Always disconnect this device from any AC supply before cleaning.
8. While cleaning, use a damp cloth instead of liquid or spray detergents.
9. Make sure the device is installed near a power outlet and is easily accessible.
10. Keep this device away from humidity.
11. Place the device on a solid surface during installation to prevent falls
12. Do not cover the openings on the device to ensure optimal heat dissipation.
13. Watch out for high temperatures when the system is running.
14. Do not touch the heat sink or heat spreader when the system is running
15. Never pour any liquid into the openings. This could cause fire or electric shock.
16. As most electronic components are sensitive to static electrical charge, be sure to ground yourself to prevent static charge when installing the internal components. Use a grounding wrist strap and contain all electronic components in any static-shielded containers.

17. If any of the following situations arises, please the contact our service personnel:
  - i. Damaged power cord or plug
  - ii. Liquid intrusion to the device
  - iii. Exposure to moisture
  - iv. Device is not working as expected or in a manner as described in this manual
  - v. The device is dropped or damaged
  - vi. Any obvious signs of damage displayed on the device
18. **DO NOT LEAVE THIS DEVICE IN AN UNCONTROLLED ENVIRONMENT WITH TEMPERATURES BEYOND THE DEVICE'S PERMITTED STORAGE TEMPERATURES (SEE CHAPTER 1) TO PREVENT DAMAGE.**
19. Do not use the battery pack if any part of it is protruding or inflated. Replace with a new battery pack immediately.
20. If the battery pack cannot be charged (won't hold a charge, system is unable to charge it), replace the battery pack with a new one immediately.

## FCC Statement

---

### **Warning!**



This device complies with Part 15 FCC Rules. Operation is subject to the following two conditions: (1) this device may not cause harmful interference, and (2) this device must accept any interference received including interference that may cause undesired operation.

### **Caution:**

*There is a danger of explosion if the battery is incorrectly replaced. Replace only with the same or equivalent type recommended by the manufacturer. Dispose of used batteries according to the manufacturer's instructions and your local government's recycling or disposal directives.*

### **Attention:**

*Il y a un risque d'explosion si la batterie est remplacée de façon incorrecte. Ne la remplacer qu'avec le même modèle ou équivalent recommandé par le constructeur. Recycler les batteries usées en accord avec les instructions du fabricant et les directives gouvernementales de recyclage.*



## 产品中有毒有害物质或元素名称及含量

AAEON System

QO4-381 Rev.A0

部件名称	有毒有害物质或元素					
	铅 (Pb)	汞 (Hg)	镉 (Cd)	六价铬 (Cr(VI))	多溴联苯 (PBB)	多溴二苯 醚(PBDE)
印刷电路板 及其电子组件	×	○	○	○	○	○
外部信号 连接器及线材	×	○	○	○	○	○
外壳	○	○	○	○	○	○
中央处理器 与内存	×	○	○	○	○	○
硬盘	×	○	○	○	○	○
液晶模块	×	×	○	○	○	○
光驱	×	○	○	○	○	○
触控模块	×	○	○	○	○	○
电源	×	○	○	○	○	○
电池	×	○	○	○	○	○
<p>本表格依据 SJ/T 11364 的规定编制。</p> <p>○：表示该有毒有害物质在该部件所有均质材料中的含量均在 GB/T 26572标准规定的限量要求以下。</p> <p>×：表示该有害物质的某一均质材料超出了GB/T 26572的限量要求，然而该部件仍符合欧盟指令2011/65/EU 的规范。</p> <p>备注：            一、此产品所标示之环保使用期限，系指在一般正常使用状况下。            二、上述部件物质中央处理器、内存、硬盘、光驱、电源为选购品。            三、上述部件物质液晶模块、触控模块仅一体机产品适用。</p>						

# China RoHS Requirement (EN)

## Hazardous and Toxic Materials List

AAEON System

QO4-381 Rev.A0

Component Name	Hazardous or Toxic Materials or Elements					
	Lead (Pb)	Mercury (Hg)	Cadmium (Cd)	Hexavalent Chromium (Cr(VI))	Polybrominated biphenyls (PBBS)	Polybrominated ethers (PBDES)
PCB and Components	X	O	O	O	O	O
Wires & Connectors for Ext.Connections	X	O	O	O	O	O
Chassis	O	O	O	O	O	O
CPU & RAM	X	O	O	O	O	O
HDD Drive	X	O	O	O	O	O
LCD Module	X	X	O	O	O	O
Optical Drive	X	O	O	O	O	O
Touch Control Module	X	O	O	O	O	O
PSU	X	O	O	O	O	O
Battery	X	O	O	O	O	O

This form is prepared in compliance with the provisions of SJ/T 11364.

O: The level of toxic or hazardous materials present in this component and its parts is below the limit specified by GB/T 26572.

X: The level of toxic of hazardous materials present in the component exceed the limits specified by GB/T 26572, but is still in compliance with EU Directive 2011/65/EU (RoHS 2).

**Notes:**

1. The Environment Friendly Use Period indicated by labelling on this product is applicable only to use under normal conditions.
2. Individual components including the CPU, RAM/memory, HDD, optical drive, and PSU are optional.
3. LCD Module and Touch Control Module only applies to certain products which feature these components.

## Table of Contents

---

<b>Chapter 1 - Product Specifications .....</b>	<b>1</b>
1.1 Specifications.....	2
<b>Chapter 2 – Getting Started.....</b>	<b>6</b>
2.1 Product Overview .....	7
2.2 Notes before use.....	12
2.3 Turning on the Device .....	13
2.4 Touch Controls .....	14
2.5 COM Port Pin Definition (RS232/422/485).....	15
<b>Chapter 3 – System Settings.....</b>	<b>16</b>
3.1 Settings Screen .....	17
3.1.1 System.....	20
3.1.2 Device .....	23
3.1.3 Network & Internet .....	24
3.1.4 Personalization Settings .....	25
3.1.5 Accounts.....	26
3.1.6 Time & Language Settings .....	27
3.1.7 Ease of Access Settings .....	28
3.1.8 Privacy Settings.....	29
3.1.9 Update & Security .....	30
<b>Chapter 4 – Optional Accessories.....</b>	<b>31</b>
4.1 Barcode Scanner .....	32
4.2 Docking Station .....	33
4.2.1 Specifications.....	34
4.3 Install Camera Metro UI.....	36
<b>Appendix A – Statements.....</b>	<b>40</b>
A.1 Statements.....	41

A.2	Canadian Notice.....	43
A.3	Safety Caution.....	44
A.4	Battery Disposal.....	46
A.5	Battery Caution.....	47
A.6	Adapter Caution.....	49
A.7	FCC Interference Statement.....	50
A.8	Regulatory Information and Disclaimers.....	51
A.9	Charging LED Indicator Caution .....	52

# Chapter 1

---

Product Specifications

## 1.1 Specifications

---

### System

<b>Processor</b>	7 <sup>th</sup> Gen Intel Processors (formerly Kaby Lake) Core i5-7300U Dual Core 2.6 GHz Core i3-7100U Dual Core 2.4 GHz Celeron 3965U Dual Core 2.2 GHz
<b>Operating System</b>	Windows® 10 IoT Enterprise 64bit (Default) Windows® 7 (Optional, systems with Skylake processors)
<b>Memory</b>	DDR3L SODIMM Socket x 1, up to 8GB DDR4 SODIMM Socket (Optional), up to 16GB
<b>Storage</b>	M.2 (NGFF) SSD, 64GB (Default)
<b>Display</b>	11.6" FHD (1920x1080) 300-nit / 1000-nit TFT-LCD With Projected Capacitive Multi-Touch Screen
<b>I/O Port</b>	HDMI port x 1 SIM card slot x 1 Micro-SD card slot x 1 Audio jack x 1 (3.5mm) USB 3.2 Gen 1 x 1 (Type A) USB 3.2 Gen 1 x 1 (Type C) (Optional) USB 2.0 x 2 (Type A) DC-in Jack x 1 RS-232/422/485 COM Port x 1 10/100/1000 Base-T RJ45 Ethernet x 1
<b>Wireless Communication</b>	Wi-Fi 802.11 b/g/n, Bluetooth v4.1

## System

<b>Navigation</b>	GPS, GLONASS
<b>WWAN (optional)</b>	LTE via mini-card slot (Optional)
<b>Camera</b>	2 MP front camera 5 MP auto-focus rear camera with flash
<b>Sensor</b>	G-sensor, E-compass, Gyro-sensor, Light-sensor
<b>Expansion Slot</b>	Docking connector x 1 GNSS antenna Pass-through connector x 1, WWAN antenna Pass-through connector x 1
<b>Barcode Scanner (Optional)</b>	2D Barcode scanner, OPTICON MDI-4100-USB (Optional)
<b>HF RFID (Optional)</b>	ISO 15693 (R/W) ISO 18092 (R/W) ISO 14443-A (R/W) ISO 14443-B (Read Only UID) Depending on card type
<b>Physical Key</b>	F0 or Windows (Windows Start Key) F1 (Ctrl+Alt+Del & Barcode Scanner Trigger) F2 (Touch Mode Switch) F3 (PrtSc/Print Screen) Volume Up, Volume Down

## Mechanical

<b>Color</b>	Gray & Black
<b>Dimension (W x H x D)</b>	12.36" x 7.87" x 0.96" (310.4mm x 200mm x 24.5mm)
<b>Gross Weight</b>	3.3 lbs. (1.5 kg)

## Environmental

<b>Operating Temperature</b>	-4°F ~ 140°F (-20°C ~ 60°C)
<b>Storage Temperature</b>	-67°F ~ 158°F (-55°C ~ 70°C)
<b>Humidity</b>	50°C; 5% ~ 90% R/H; 120 hours, non-condensing
<b>Environmental Sealing</b>	IP65
<b>Vibration</b>	MIL-STD-810G Method 514.6 Procedure I, Cat. 24, Fig. 514.6E-1 & E-2
<b>Drop</b>	MIL-STD-810G Method 516.6 Procedure IV Height of Drop: 122cm (48 inch; 4ft), Number of Drop: 26 times Floor: 2 inch plywood backed by concrete For all surfaces, edges and corners
<b>ESD</b>	Air charge: +/- 8KV, Contact charge: +/- 4KV
<b>Certifications and Standards</b>	UL: UL60950-1, CE/LVD: EN60950-1, FCC, CE



## Power Supply

AC / DC Adapter	AC 100~240V, 50~60 Hz; DC 19V/3.42A (65W)
Battery Life	Dual Li-ion High Capacity Batteries, up to 10 Hours Battery Life
Master Battery	Hot-swappable battery: 14.4V, 2270mAh, 32.7W
Slave Battery	Hot-swappable battery: 14.4V, 2270mAh, 32.7W

## Display

LCD	11.6" TFT-LCD/ 16:9, with LED backlight
Resolution	1920 x 1080 pixel
Maximum Color	16.7M
Dot Size	0.117 x 0.117(H)
Brightness	1000 nits; 300 nits (Optional)
Viewing Angle	Horizontal: 178° (Typ.), Vertical: 178° (Typ.)

## Touchscreen

Touch Type	11.6" Projected Capacitive Multi-Touch Screen Gloves / Finger Switchable by F2
Light Transmission	Min 87% (ASTM D1003; Wavelength = 550 nm)

# Chapter 2

---

Getting Started

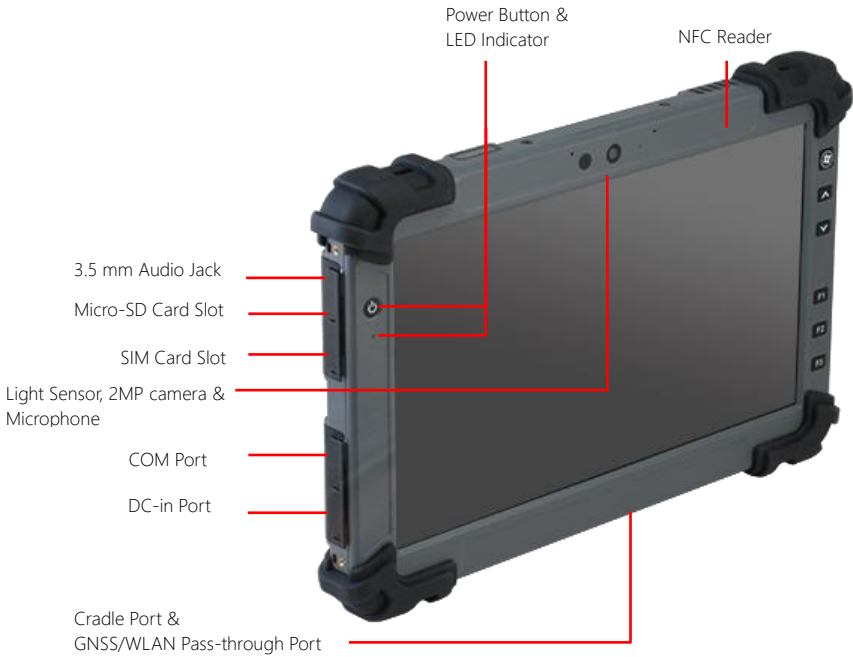
## 2.1 Product Overview

---

### Front View



## Side View (Left)



Label	Function
<b>NFC Reader</b>	ISO 15693 (R/W) ISO 18092 (R/W) ISO 14443-A (R/W) ISO 14443-B (Read Only UID) Depending on card type
<b>Power Button</b>	Shut down/power on & sleep mode by Power Options in System Settings
<b>LED Indicator</b>	Battery Charge Status; Orange or Green (full)
<b>3.5 mm Audio Jack</b>	Usable with any audio device with a 3.5 mm jack.

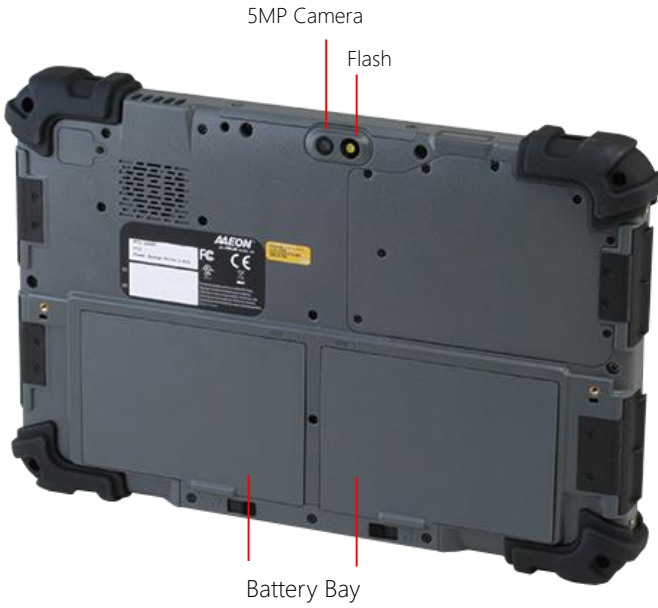
Label	Function
micro-SD card Slot	support up to SDXC 2TB
SIM Card Slot	Usable with standard-size SIM cards only.
Light Sensor	Ambient Light Sensor
2MP camera	1080p FHD Webcam
Microphone	DMiC for speech/voice program
COM Port	RS232/422/485
DC-in Port	AC Power input: 100V-240V, 50Hz-60Hz, 65W output: 19V
Cradle & GNSS/WLAN Pass-through Port	For interaction with docking station I/O

## Side view (Right)



Label	Function
Windows Key	Start Menu Key
Volume Up	Speaker volume up
Volume Down	Speaker volume down
F1	Ctrl+Atl+Del as Soft Reboot & BCR Trigger Button (When BCR is enable)
F2	Touch Modes Switch; Finger (Rain) or Gloves
F3	Print Screen
HDMI	HDMI 1.4
USB3.0	Type A slot
USB2.0	Type A slot
USB2.0	Type A slot
RJ45	GbE LAN

## Rear View



Part	Function
5MP Camera & Flash	QSXVGA Camera with Flash
Battery Bay	Battery bay for 2 batteries

## 2.2 Notes before use

---

Before using your device, please read through the following instructions

- Use only the power adapter that came with your device. Using a different power adapter may cause damage.
- The AC adapter is designed for use with the **RTC-1200 only**.
- This product is intended to be supplied with a Listed Power Adapter or DC power source, rated 19Vdc, 3.42A minimum, Tma = 40°C. Please contact AAEON for further assistance.
- Using a power outlet is the best way to charge your device (refer to section 1.2 for the adapter's voltage output and acceptable input)
- When using the device for the first time, fully charge the battery for up to 8 hours. If the device is inactive, charging the battery once per month is recommended to prevent deterioration.
- There are two batteries in the RTC-1200: both batteries can be monitored at the title bar). Charge the device once Battery 1 drops below 20%
- Always allow your battery to be fully charged before use. Calibrating the battery before use is highly recommended.
- To prolong battery life, allow a fully charged battery to discharge more than 95% before recharging.
- Ensure that the battery cover is properly secured by manually pushing the pin to lock position.
- The RTC-1200 **CANNOT** be charged via an USB connection.
- The IP65 waterproof protection may get damaged when subjected to shocks greater than levels tested in MIL-STD-810G Method 516.6 Procedure IV. The protection may also be affected if the rubber connector fails to cover or close firmly.



## 2.3 Turning on the Device

---



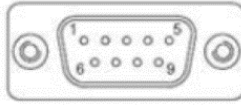
- The power button turns your device on and off. Hold the button for one second to power on.
- To start or wake up from sleep mode, hold the power button for 0.5 seconds until the shutdown confirmation is shown. If the system remains unresponsive, press and hold the power button to force power off. **Caution:** shutting down the system in this manner may result in data loss. It is strongly recommended that important data is backed up on a regular basis.

## 2.4 Touch Controls

---

Gesture	Action
Single Tap	Single taps allow users to open any files or applications or select text input area
Long Tap (Tap and Hold)	Long tapping an icon allows it to be moved freely on the screen. This gesture also opens the context menu, letting you cut, copy, rename, delete the selected file, or select multiple files for batch actions

## 2.5 COM Port Pin Definition (RS232/422/485)



Serial Port Pin Definition			
Pin No	RS232	RS485	RS422 & 485 1T/1R
1	DCD	DATA-	TX-
2	RX	DATA+	TX+
3	TX		RX+
4	DTR		RX-
5	GND		
6	DSR		
7	RTS		
8	CTS		
9	RI		

**Note:** COM Port Mode (RS232, RS422, RS485) can be set in the system BIOS.

After entering the BIOS, go to the Advanced Menu, then select "IO Device Configuration" to choose "UART1 Mode" to change the settings.

# Chapter 3

---

## System Settings

### 3.1 Settings Screen

---

The Settings screen allows you to configure some settings of your RTC-1200 which includes:

Main Category	Sub Category
System	Display
	Notifications
	Apps
	Power
Device	Bluetooth
	Printers
	Mouse
Networks & Internet	Wi-Fi
	Airplane Mode
	VPN
Personalization	Background
	Lock Screen
	Colors
Accounts	Your Account
	Sync Settings
	Work
	Family
Time & Language	Speech
	Region
	Date

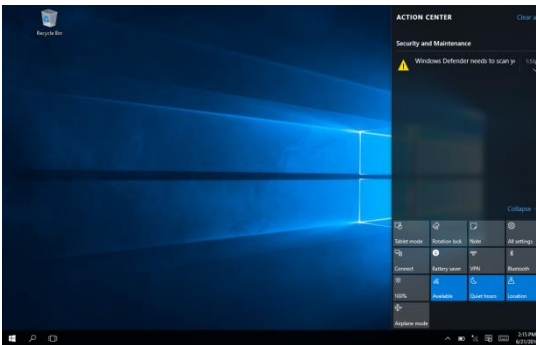
Main Category	Sub Category
Ease of Access	Narrator
	Magnifier
	High Contrast
Privacy	Location
	Camera
Update & Security	Windows Update
	Recovery
	Backup

## To enter the Settings Menu

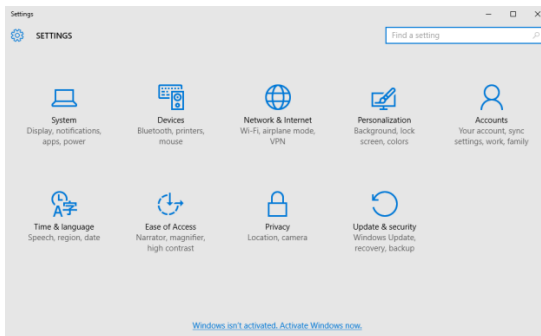
From the Home Screen



1. Open the Charm Bar.



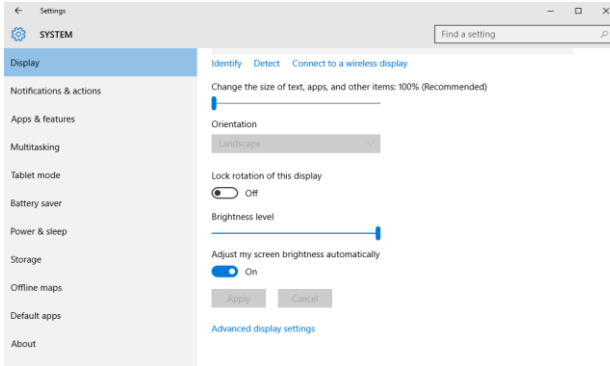
2. Tap Settings



## 3.1.1 System

### Configuring the Display.

1. Go to **Settings** > **System** > **Display**.



·Font Size:

Adjust the font size here.

·Display Rotation:

Rotation of display is locked when set to On.

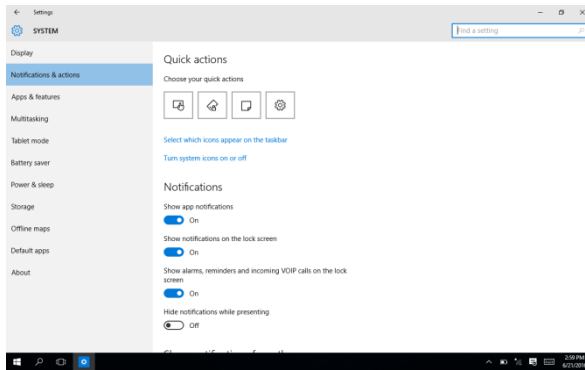
·Brightness:

Allow the device to adjust the screen brightness automatically.



## Configuring Notifications

1. Go to **Settings >System**
2. Select **Notifications & actions**



### •Show app notifications:

Turn app notifications On or Off.

### •Lock Screen:

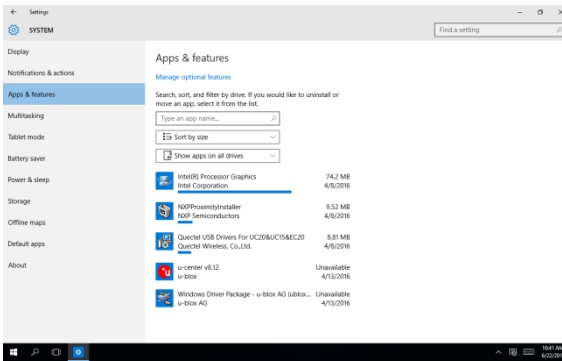
Turn notifications on the lock screen On or Off.

### •Alarms, Reminders, Incoming VOIP calls:

Turn On or Off displaying notifications on the lock screen for alarms, reminders and incoming VOIP calls

## Configuring Apps & Features

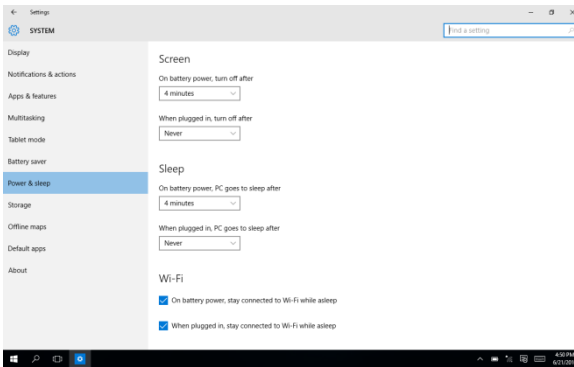
1. Go to **Settings> System> Apps & features**



2. You can view the amount of the space used by applications installed on your system.

## Configuring Power Settings

1. Go to **Settings> System**



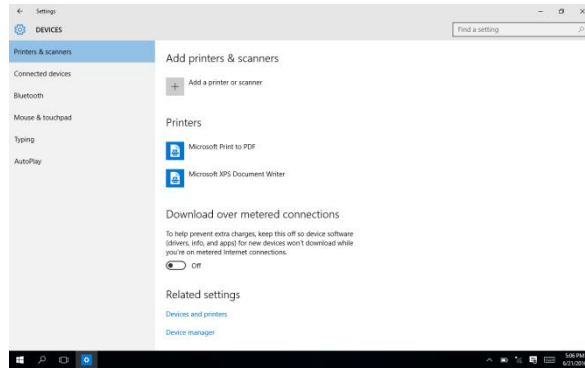
2. Select **Power & Sleep**.

3. Set up how long the system waits when idle before turning off the screen and entering sleep mode.

## 3.1.2 Device

### Adding Printers & Scanners

1. Go to **Settings>Devices**.

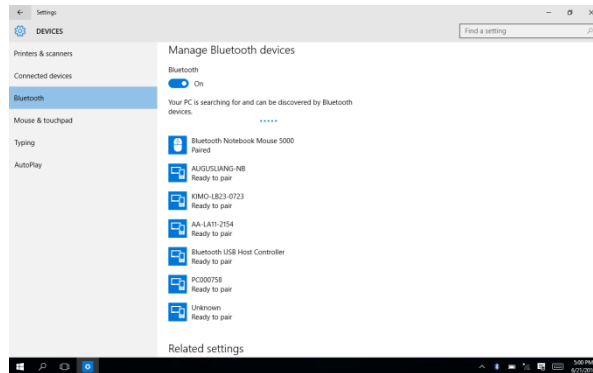


2. Select **Printers & Scanners**.

3. You may add a printer or scanner.

### Pairing Bluetooth devices

1. Go to **Settings>Devices**.



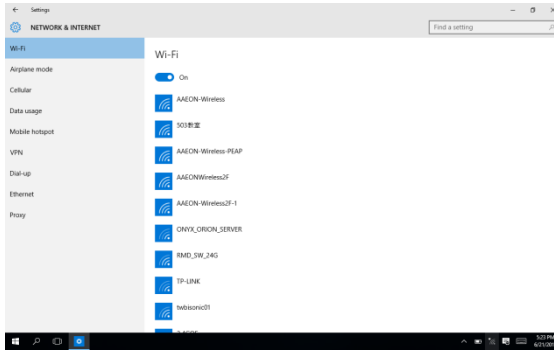
2. Select **Bluetooth** to turn on the Bluetooth.

3. Search and select the device you would like to pair with.

### 3.1.3 Network & Internet

#### Connecting to a Wi-Fi Network

1. Go to **Settings**> **Network & Internet**> **Wi-Fi**

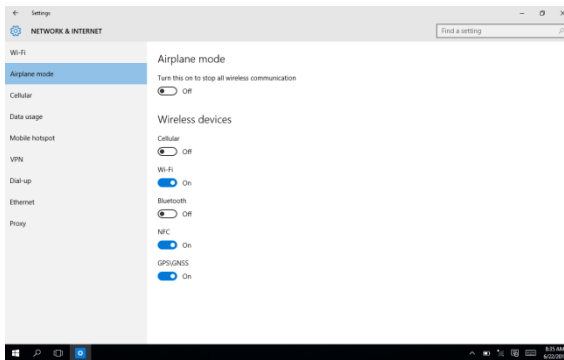


2. Select the access point you wish to connect to from the list.

3. Enter the network password and tap **Connect**

#### Activating Airplane Mode

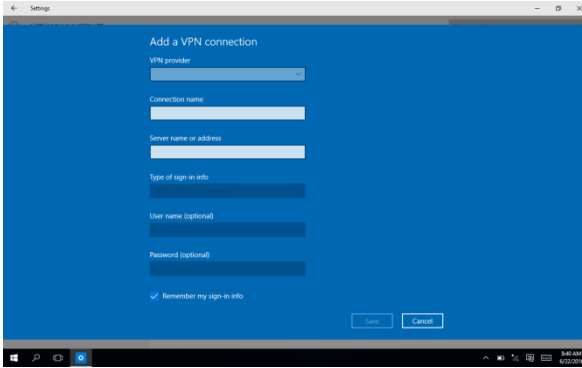
1. Go to **Settings**> **Network**> **Airplane mode**.



2. Turn on airplane mode to stop all wireless communication, or select which wireless devices to disable.

## Configuring VPN

1. Go to **Settings**> **Network**> **VPN**

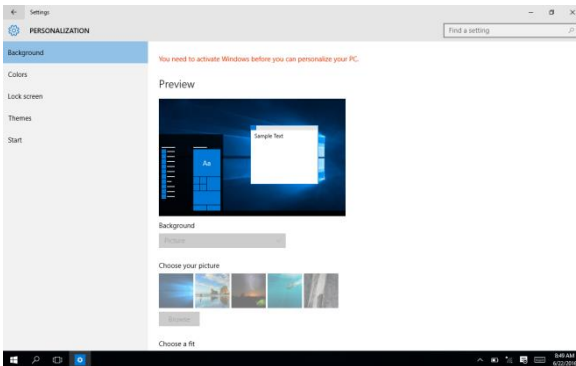


2. Enter the VPN information into the fields and tap Save.

## 3.1.4 Personalization Settings

### Background, Colors, and Lock Screen

1. Go to **Settings**> **Personalization**

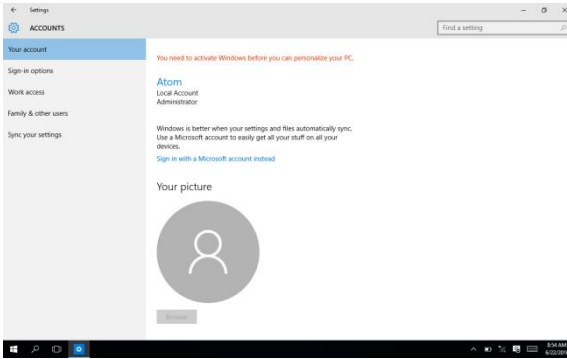


2. Set Background image, system colors, lock screen or system theme

## 3.1.5 Accounts

### Configuring User Accounts

#### 1. Go to **Settings**> **Accounts**.

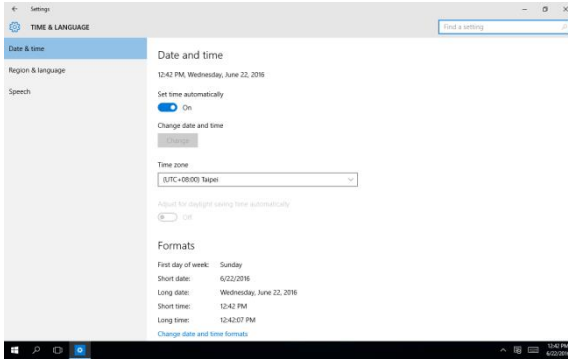


2. Configure User Account settings. **Note:** You must be logged into the Administrator account or have Administrator privileges to configure other users on the system.

## 3.1.6 Time & Language Settings

### Configuring Date & Time

#### 1. Go to Settings > Time & Language

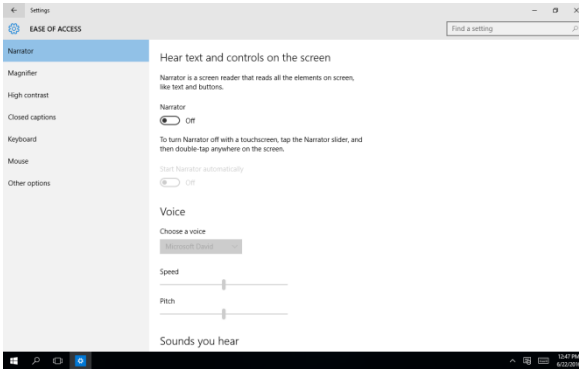


2. Set the device's date and time, time zone, and display format here.

## 3.1.7 Ease of Access Settings

### Configuring Accessibility

#### 1. Go to Settings > Ease of Access



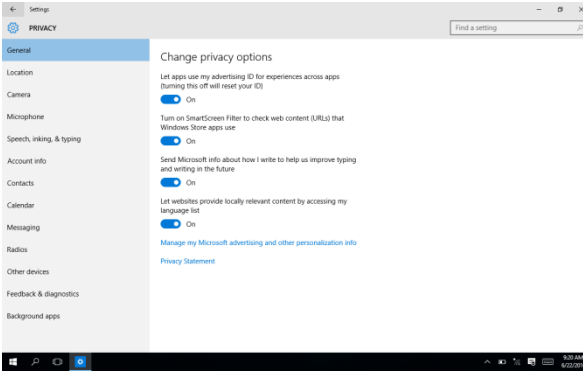
2. Configure settings for system accessibility, including narrator, magnifier, high contrast, closed captions, keyboard, mouse and other options.



## 3.1.8 Privacy Settings

### Changing Privacy Options

#### 1. Go to Settings > Privacy

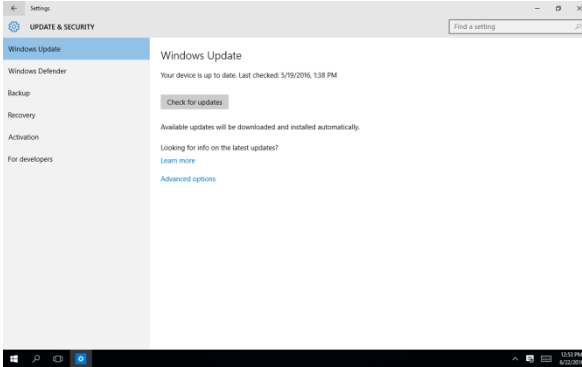


#### 2. Configure privacy settings here.

## 3.1.9 Update & Security

### Windows Updates

1. Go to **Settings**> **Update & Security**.



2. Check for updates and configure Windows Update, Windows Defender, system backup, recovery and Windows Activation here.

# Chapter 4

---

Optional Accessories

## 4.1 Barcode Scanner

The barcode scanner enables the RTC-1200 to read and scan barcodes for a wide variety of purposes. **Note:** Barcode scanner does not ship with any software or SDKs.

Perform the following test to check if the scanner is working properly:

1. Open Notepad
2. Scan a barcode
3. If the scanner is working, the code will be scanned and entered into the Notepad document.

For detailed specifications and operating instructions, please refer to the barcode scanner manual in the driver disk provided.

You can scan the barcode below to change the USB interface type.



@MENU\_OPTO@ZZ@X.Z  
@SU@ZZ@OTPO\_UNEM@

Description	Code
Change to Maintenance mode	X.Z
Defaults USB HID	SU



@MENU\_OPTO@ZZ@X.Z  
@C01@ZZ@OTPO\_UNEM@

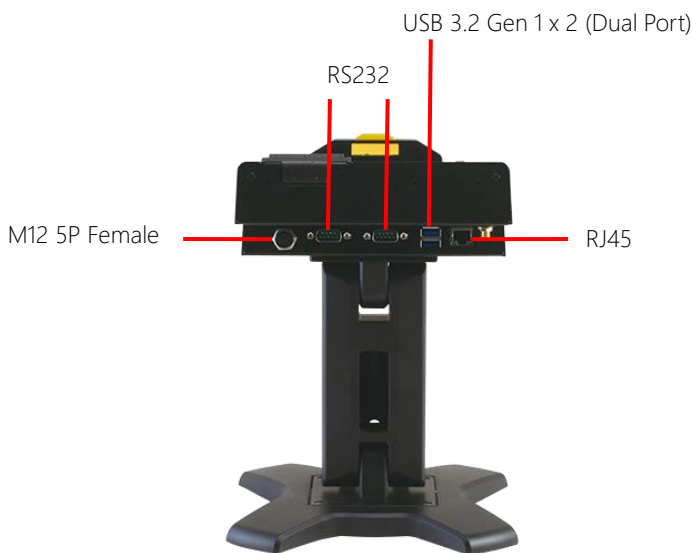
Description	Code
Change to Maintenance mode	X.Z
Defaults USB VCP	C01

## 4.2 Docking Station

---

The docking station provides users with a stable and convenient platform when using the RTC-1200 at a workstation or desktop. The docking station provides additional I/O ports, and allows users to connect a keyboard and mouse.





## 4.2.1 Specifications

### Connectors & LED indicators

I/O	<ul style="list-style-type: none"> <li>USB 2.0 x 2</li> <li>USB 3.2 Gen 1 x 2 (Dual Port)</li> <li>RJ45 jack for 10/100/1000 Base-TX</li> <li>Ethernet x 1</li> <li>RS-232 x 2</li> <li>External antenna for GPS and WWN x 2</li> </ul>
DC Input	M12 5P Female (DC 9V to 36V)
LED Indicator	<ul style="list-style-type: none"> <li>Orange: DC in w/o Tablet</li> <li>Blue: DC in w/ Tablet</li> </ul>

## Mechanical

Color	Black
Construction	PC
Dimensions (W x H x D)	261 x 165 x 75 mm (10.28 x 6.5 x 2.96")
Gross Weight	2.92 kg (6.44 lbs.)

## Environmental

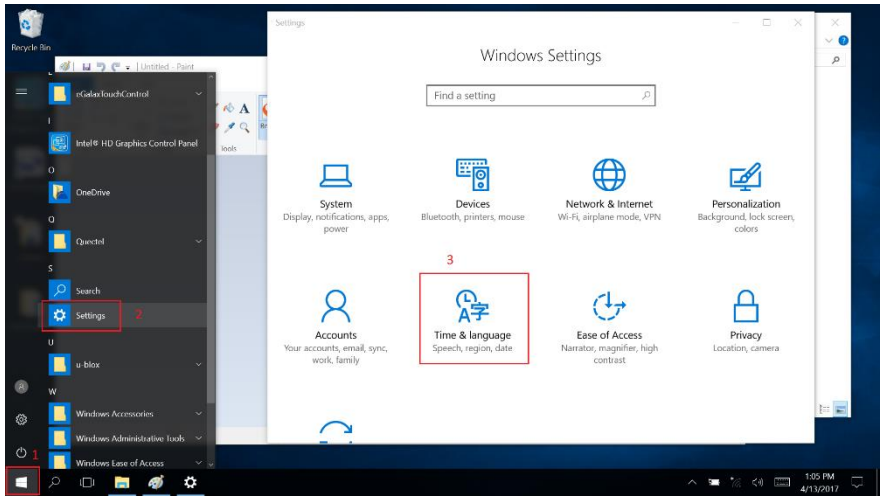
Operating Temperature	0°C ~ 40°C (32 ~ 104°F)
Storage Temperature	-10°C ~ 50°C (14 ~ 122°F)
ESD	Air +/- 8KV, Contact +/- 4KV
EMI/ Safety	CE/ FCC Class B/ UL

## Power Supply

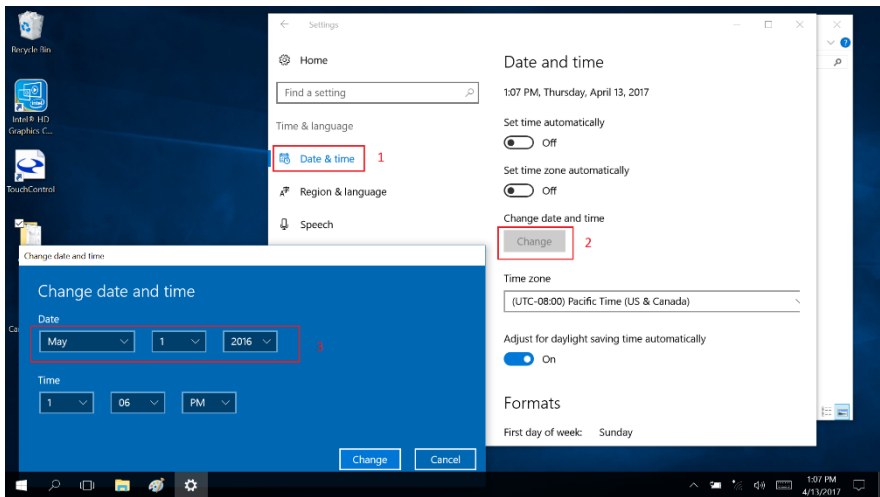
AC/DC Adapter	AC Power Input: 100 ~ 240 V, 47 ~ 63 Hz, 90 W output: 19 V, 4.74 A
---------------	---

## 4.3 Install Camera Metro UI

1. Open Windows Settings menu and go to Time & language:

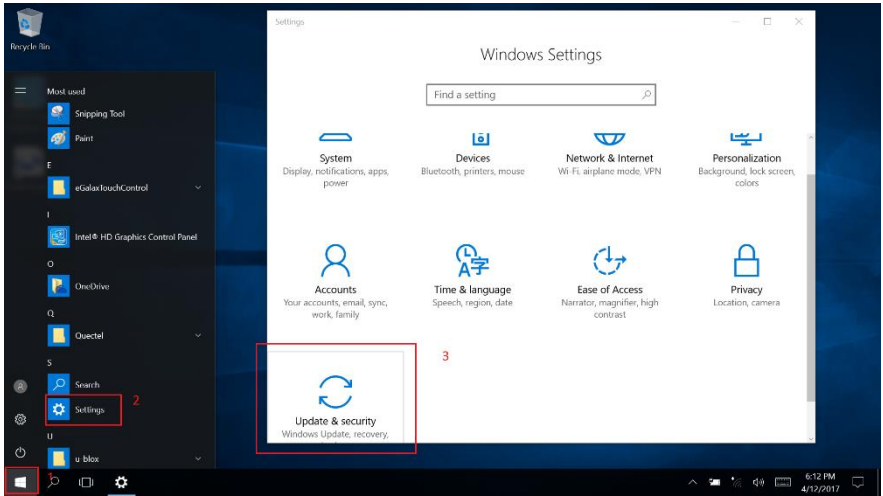


2. Change date and time to May 1, 2015 as shown below:

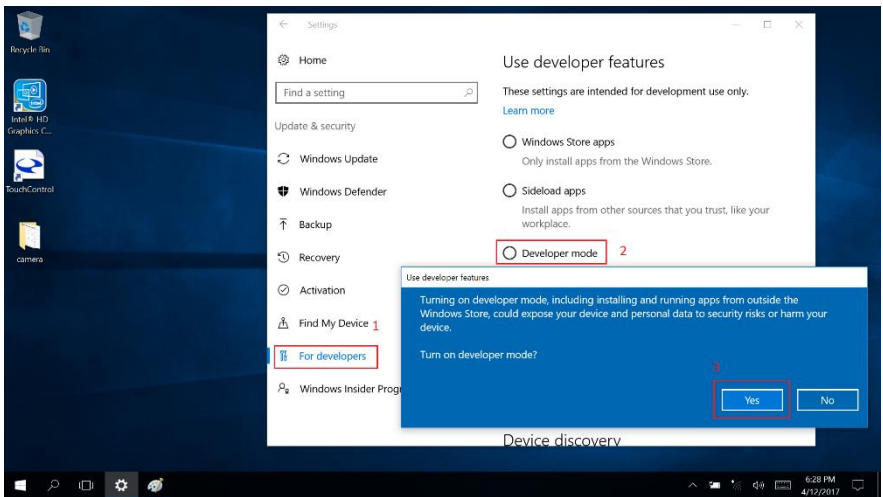




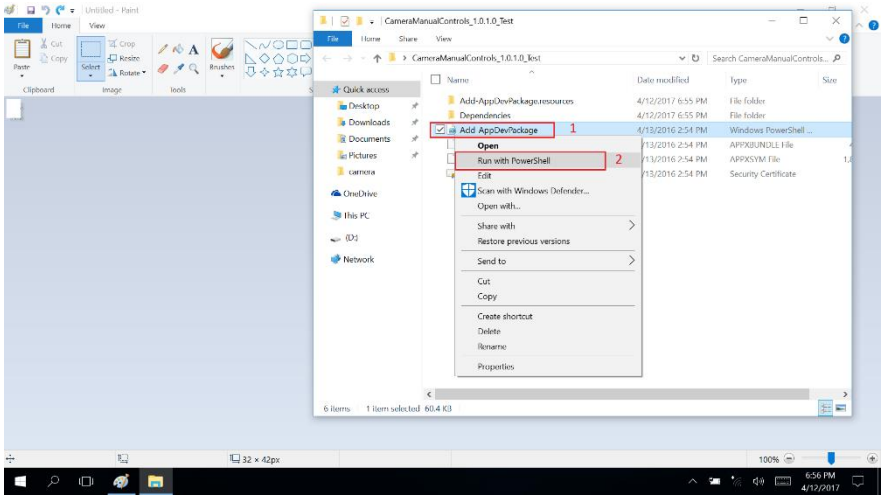
3. Go back to Windows Settings and go to Update & security:



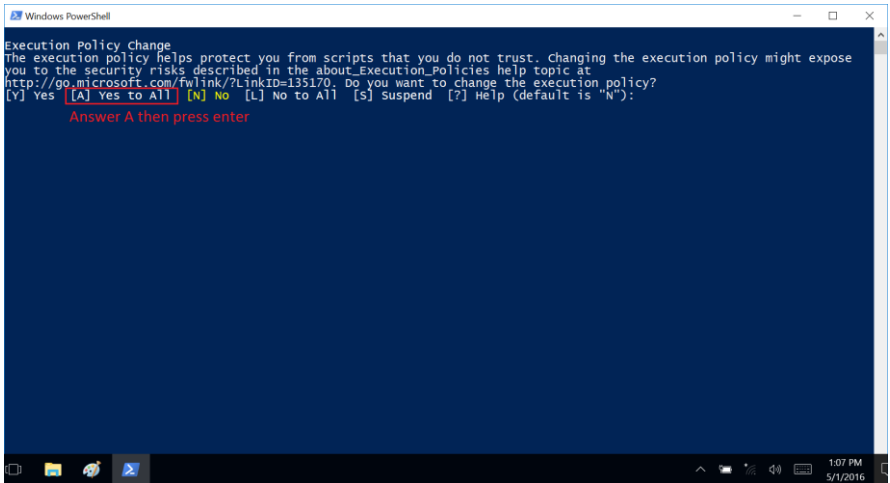
4. Open "For developers" submenu and enable Developer mode. Click "Yes" to confirm.



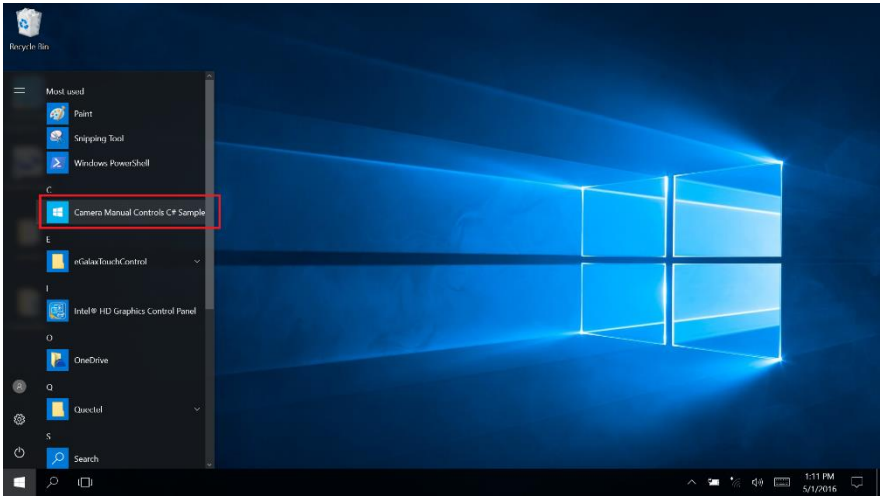
5. Right-click **Add-AppDevPackage** file and select "Run with PowerShell"



6. Press A, then press Enter to execute.



- After installation is complete, restart the system. You should see the Camera Manual Controls app in the Start Menu.



# Appendix A

---

Statements

## A.1 Statements

---

### Declarations and Safety Statements

#### **Federal Communications Commission Statement**

This device complies with part 15 of the FCC Rules. Operation is subject to the following conditions: (1) This device may not cause harmful interference (2) This device must accept any interference received, including interference that may cause undesired operation.

This device has been tested and found to comply with the limits for a Class B digital device, pursuant to Part 15 of the FCC Rules. These limits are designed to provide reasonable protection against harmful interference in a residential installation. This equipment generates, uses and can radiate radio frequency energy and, if not installed and used in accordance with the instructions, may cause harmful interference to radio communications. However, there is no guarantee that interference will not occur in a particular installation. If this equipment causes harmful interference to radio or television reception, which can be determined by turning the equipment off and on, the user is encouraged to try to correct the interference by one or more of the following measures:

- Reorient or relocate the receiving antenna.
- Increase the separation between equipment and receiver.
- Connect the equipment into an outlet on a circuit different from that to which the receiver is connected.
- Consult the dealer or an experienced radio/TV technician for help.
- Changes or modifications not expressly approved by the party responsible for compliance could void the user's authority to operate the equipment.

The antenna(s) used for this transmitter must not be co-located or operating in conjunction with any other antenna or transmitter.

#### RF Exposure Information (SAR)

This device meets the government's requirements for exposure to radio waves. This device is designed and manufactured not to exceed the emission limits for exposure to radio frequency (RF) energy set by the Federal Communications Commission of the U.S. Government.

The exposure standard employs a unit of measurement known as the Specific Absorption Rate (SAR). The SAR limit set by the FCC is 1.6W/kg. Tests for SAR are conducted using standard operating positions accepted by the FCC with the EUT transmitting at the specified power level in different channels.

The highest SAR value for the device as reported to the FCC is 1.01 W/kg when placed next to the body.

The FCC has granted an Equipment Authorization for this device with all reported SAR levels evaluated as in compliance with the FCC RF exposure guidelines. SAR information on this device is on file with the FCC and can be found under the Display Grant section of [www.fcc.gov/oet/ea/fccid](http://www.fcc.gov/oet/ea/fccid) on the FCC ID: OHBRTC1200WBGH

#### Federal Communication Commission (FCC) Radiation Exposure Statement

This equipment complies with FCC radiation exposure limits set forth for an uncontrolled environment. End user must follow the specific operating instructions for satisfying RF exposure compliance.

## A.2 Canadian Notice

---

### IC Regulations

This device complies with Industry Canada license-exempt RSS standard(s). Operation is subject to the following two conditions: (1) this device may not cause interference, and (2) this device must accept any interference, including interference that may cause undesired operation of the device.

This Class B digital apparatus complies with Canadian ICES-003.

Cet appareil numérique de la classe B est conforme à la norme NMB-003 du Canada.

This Category II radio communication device complies with Industry Canada Standard RSS-310.

Ce dispositif de radio communication de catégorie II respecte la norme CNR-310 d'Industrie Canada.

### IC Radiation Exposure Statement

This EUT is compliant with SAR for general population/uncontrolled exposure limits in IC RSS-102 and has been tested in accordance with the measurement methods and procedures specified in IEEE 1528. This equipment should be installed and operated with minimum distance 0 cm between the radiator and your body.

This device and its antenna(s) must not be co-located or operating in conjunction with any other antenna or transmitter.

The County Code Selection feature is disabled for product marketed in the U.S. and Canada.

For products available in the U.S./Canada markets, only channels 1-11 can be operated. The selection of other channels is not possible.

## A.3 Safety Caution

---

### Important Safety Instructions

#### Power Safety Requirement

Products with electrical current ratings up to 3A and weighs more than 1 Kg must use approved power cords greater than or equal to: VCTF, 3G or 0.75mm<sup>2</sup>.

Basic safety precautions should always be followed to reduce the risk of fire, electric shock and injury to persons, including the following:

- Do not use this product near water, for example, near a bathtub, wash bowl, kitchen sink or laundry tub, in a wet basement or near a swimming pool.
- Avoid using a telephone (other than a cordless type) during an electrical storm. There may be a remote risk of electric shock from lightning.
- Do not use the telephone to report a gas leak in the vicinity of the leak.
- Use only the power cord and batteries indicated in this manual. Do not dispose of batteries in a fire. They may explode. Check with local codes for possible special disposal instructions.

#### *Instructions importantes de sécurité.*

#### *Exigences de sécurité concernant l'alimentation.*

*Les produits dont le courant électrique monte jusqu'à 3A et pesant plus de 1Kgs doivent utiliser un cordon d'alimentation approuvé égal ou supérieur à VCTF, 3G ou 0.75mm<sup>2</sup>*

*Des mesures de précaution de base doivent toujours être suivies afin de réduire les risques d'incendie, de choc électrique et de blessures aux personnes, incluant :*





- *Ne pas utiliser ce produit près de l'eau, par exemple dans une baignoire, une cuvette, un évier, une machine à laver, un sous-sol humide ou une piscine.*
- *Eviter d'utiliser un téléphone (autre que sans fil) pendant un orage électrique ? il y a un risque de choc électrique à distance lié à la foudre.*
- *Ne pas utiliser le téléphone pour alerter lors d'une fuite de gaz si vous êtes dans le*



*voisinage de la fuite*

- *Utiliser seulement le cordon d'alimentation et la batterie indiqués dans le manuel. Ne pas jeter les batteries dans le feu. Elles pourraient exploser. Vérifier les dispositions locales de recyclage.*

## A.4 Battery Disposal

	<p>There is a risk of explosion if the battery is replaced by an incorrect type. Dispose of used batteries according to the instructions.</p> <p><i>Il y a un risque d'explosion si la batterie est remplacée par un autre type incorrect.</i></p> <p><i>Disposer de la batterie en accord avec les instructions.</i></p>
	<p>This symbol indicates that the battery should NOT be placed in municipal waste.</p>
	<p>DO NOT throw the tablet with municipal waste. This product is designed for proper reuse of parts and recycling. This symbol indicates that the products (electrical, electronic equipment and mercury-containing button cell battery) should not be placed in municipal waste. Check local regulations for disposal of electronic products.</p>
	<p>SAFE TEMP : The RTC-1200 should only be used in environments between -20°C (-4°F) and 50°C (122°F).</p>

## A.5 Battery Caution

---

There is a danger of explosion if the battery is incorrectly replaced. Replace only with the same or equivalent type recommended by the manufacturer. Dispose of used batteries according to the manufacturer's instructions.

*Il y a un risque d'explosion si la batterie est remplacée par un autre type incorrect.  
Disposer de la batterie en accord avec les instructions.*

### 1. User Manual

Read user manual before using the battery pack. Maintain a copy of the manual for reference as needed.

### 2. Exposure to Sunlight

Do not use, charge or store battery pack in direct sunlight, or leave in a vehicle unattended. This may shorten the battery's life, reduce charging capacity, or cause the battery to generate heat or catch fire.

### 3. Static Electricity

Battery pack features a protection circuit designed to prevent damage to the battery pack during normal use. Do not use or store near sources of static electricity (greater than 100V), as this may damage the protection circuit, resulting in damage to the battery pack, battery rupture, or fire.

### 4. Charging Temperature Range

Recommended charging temperature range is 10°C to 45°C. Do not charge the battery pack outside of the recommended range, as this may shorten the battery's life, reduce charging capacity, damage the battery pack, or cause it to generate heat.

## 5. Charging Method

If using a charging dock or accessory, please read the user manual for the charger before use and follow the recommended charging methods in that manual.

## 6. First Time Use

If you are using a battery pack for the first time and notice rust, bad smell, or something abnormal (ex: inflated), DO NOT USE the battery pack. Contact the vendor for immediate replacement.

## 7. Leakage

If the battery pack is leaking and the fluid comes in contact with clothing or skin, immediately wash with fresh water. The battery fluid may cause skin irritation.

## 8. Storage Conditions

When storing a battery pack for long periods of time, store in a dry place with no exposure to corrosive gases, within the following temperature ranges:

Less than 1 month, -20°C to 50°C

Less than 3 months, -20°C to 40°C

Less than 1 year, -20°C to 20°C

Check regularly to ensure there is no condensation on the battery pack.

## 9. Long Term Storage Maintenance

When storing battery packs for long periods of time, in order to maintain battery pack life and charging capability, the battery pack should be charged to 50% capacity every 30-45 days.

If the battery pack remains in under-voltage state for a long time, DO NOT use fast charging. It is recommended that you ship the battery to AAeon for inspection before use.

10. Do not use the battery pack if any part of it is protruding or inflated. Replace with a new battery pack immediately.
11. If the battery pack cannot be charged (won't hold a charge, system is unable to charge it), replace the battery pack with a new one immediately.
12. AAEON suggests replacing the battery pack after one year to ensure consistent performance of your rugged tablet device.

## A.6 Adapter Caution

---

This RTC is for use with model NO. FSP065-RBBN3 (AAEON Part number: 125530065A)

*Ce modèle RTC est à utiliser avec le modèle n° FSP065-RBBN3. (AAEON Référence: 125530065A)*

## A.7 FCC Interference Statement

---

This equipment has been tested and found to comply with the limits for a Class B digital device, pursuant to Part 15 of the FCC Rules. These limits are designed to provide reasonable protection against harmful interference in a residential installation. This equipment generates, uses and can radiate radio frequency energy and, if not installed and used in accordance with the instructions, may cause harmful interference to radio communications. However, there is no guarantee that interference will not occur in a particular installation. If this equipment does cause harmful interference to radio or television reception, which can be determined by turning the equipment off and on, the user is encouraged to try to correct the interference by one or more of the following measures:

- Reorient or relocate the receiving antenna.
- Increase the separation between the equipment and receiver.
- Connect the equipment into an outlet on a circuit different from that to which the receiver is connected.
- Consult the dealer or an experienced radio/TV technician for help.

FCC Caution: Any changes or modifications not expressly approved by the party responsible for compliance could void the user's authority to operate this equipment.

This device complies with Part 15 of the FCC Rules. Operation is subject to the following two conditions: (1) This device may not cause harmful interference, and (2) this device must accept any interference received, including interference that may cause undesired operation.

This device and its antenna(s) must not be co-located or operating in conjunction with any other antenna or transmitter.

**IMPORTANT NOTE:****Federal Communication Commission (FCC) Radiation Exposure Statement**

This EUT is compliance with SAR for general population/uncontrolled exposure limits in ANSI/IEEE C95.1-1999 and had been tested in accordance with the measurement methods and procedures specified in OET Bulletin 65 Supplement C.

## A.8 Regulatory Information and Disclaimers

---

Installation and use of this Wireless LAN device must be in strict accordance with the instructions included in the user documentation provided with the product. Any changes or modifications (including the antennas) made to this device that are not expressly approved by the manufacturer may void the user's authority to operate the equipment.

The manufacturer is not responsible for any radio or television interference caused by unauthorized modification of this device, or the substitution of the connecting cables and equipment other than manufacturer specified. It is the responsibility of the user to correct any interference caused by such unauthorized modification, substitution or attachment. Manufacturer and its authorized resellers or distributors will assume no liability for any damage or violation of government regulations arising from failing to comply with these guidelines.

## A.9 Charging LED Indicator Caution

---

The charging LED indicator has two types of warning behavior:

**Orange LED flashes once every 2 seconds:** this indicates the battery temperature is outside of the charging temperature range.

**Orange LED flashes three (3) times per second:** this indicates a battery abnormality.