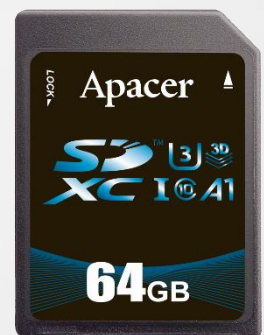


# Apacer

The Most **Reliable**  
Storage For Industries

CH110-SD



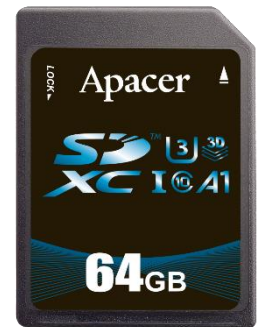
## CH110-SD

### Overview

Apacer SD CH110-SD is compatible with the SD card version 6.1. The command list supports [Physical Layer Specification Ver6.10 Final] definitions. Card Capacity of Non-secure Area, Secure Area Supports [Part 3 Security Specification Ver4.00 Final] Specifications.

The SD 6.1 card comes with 9-pin interface designed to operate at a maximum operating frequency of 208MHz. It can alternate communication protocol between the SD mode and SPI mode. It performs data error detection and correction with very low power consumption. It supports capacity up to 64GB with exFAT SDXC.

Apacer SD CH110-SD Secure Digital 5.0 card with high performance, good reliability and wide compatibility is nowadays one of the most popular cards well adapted for hand-held applications with customized firmware techniques in semi-industrial/medical markets already.



\* The actual available memory on the device is less than what is listed on the package. This is due to small discrepancies in file formats and algorithms used by various operating systems. In addition, a portion of memory space is reserved for system files and data sectors for better performance.

## CH110-SD

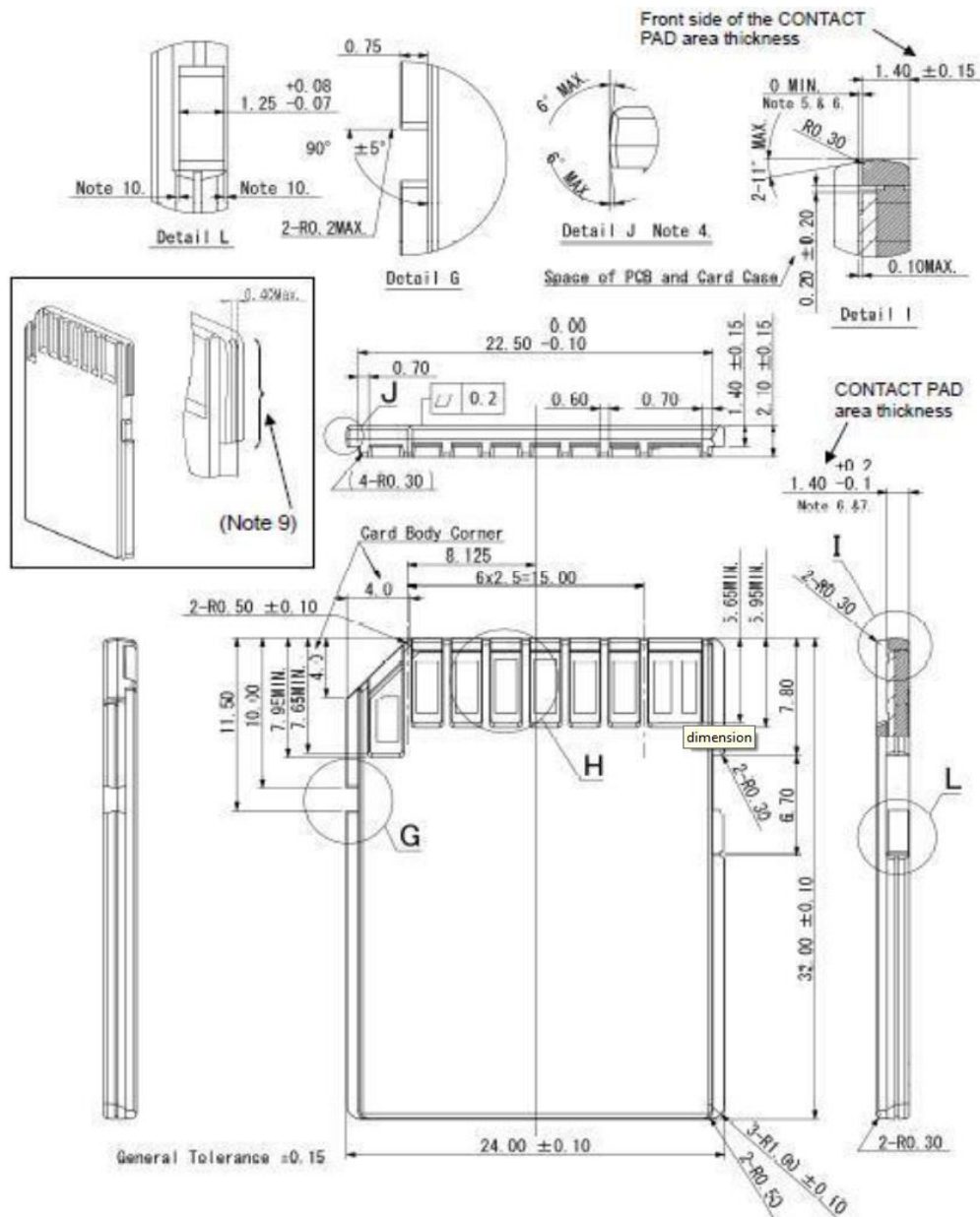
### Feature

- Compliant with SD 4.0 Specification
- Supports Class 10 with U3 and UHS-I\*\*
- S.M.A.R.T support
- Wear-Leveling and Block Management
- Low Power Consumption
- Wide Temperature Support (Optional)
- DataRAID™
- SMART Read Refresh™

## Specifications

<b>Model</b>	CH110-SD
<b>Interface</b>	SD4.0
<b>Connector</b>	—
<b>Form Factor</b>	SDHC/SDXC
<b>NAND Flash Type</b>	3D TLC
<b>Capacity</b>	SDHC: 8GB~64GB
<b>Sustained Read Performance (MB/sec)</b>	Up to 95
<b>Sustained Write Performance (MB/sec)</b>	Up to 80
<b>ECC Engine</b>	Built-in advanced ECC algorithm
<b>IOPS (4K Random Write)</b>	600
<b>Standard Operating Temperature ( °C )</b>	-25 ~ + 85
<b>Extended Operating Temperature ( °C )</b>	-40 ~ + 85
<b>Storage Temperature ( °C )</b>	-40 ~ + 85
<b>Housing</b>	Yes
<b>H/W Write Protect</b>	Yes
<b>Shock</b>	(Operating) 1,500G, 0.5ms
<b>Vibration</b>	20Hz~80Hz/1.52mm (frequency/displacement) 80Hz~2,000Hz/20G (frequency/accelerate)
<b>Operating Voltage</b>	2.7V ~ 3.6V
<b>Power Consumption</b>	Active mode: 80 mA & Idle mode: 135 uA
<b>Dimension (L x W x H )</b>	32 x 24 x 2.1 mm
<b>MTBF (hours)</b>	>3,000,000

## Mechanical Specification



Unit: mm

**For more information,  
contact your Apacer representative**

### Global Presence

Taiwan (Headquarters)  
Apacer Technology Inc.  
Tel: +886-2-2267-8000  
Fax: +886-2-2267-2261

Europe  
Apacer Technology B.V.  
Tel: +31-40-267-0000  
Fax: +31-40-290-0686

U.S.A.  
Apacer Memory America, Inc.  
Tel: +1-408-518-8699  
Fax: 1-510-249-9551

China  
Apacer Electronic(Shanghai)  
Co., Ltd.  
Tel: +86-21-6228-9939

Japan  
Apacer Technology Corp.  
Tel: +81-3-5419-2668  
Fax: +81-3-5419-0018

India  
Apacer Technologies Pvt. Ltd.  
Tel: +91-80-41529061~3  
Fax: +91-80-41700215