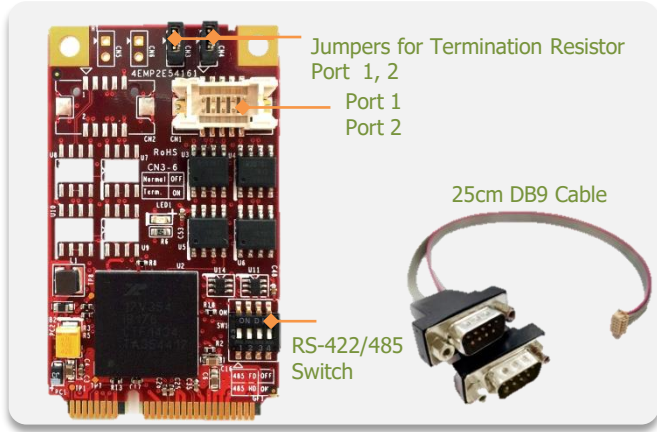


# EMP2-X202

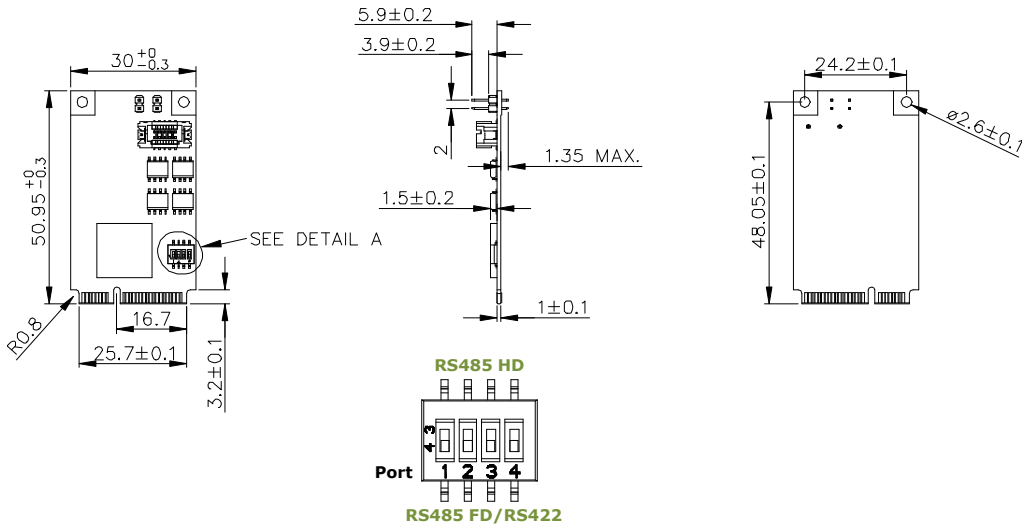
## mPCIe to two RS-422/485 Module



### Features

- PCIe 2.0 compliant. RS-422/485 mode configurable by switch. Supports 485HD(Half Duplex) and 485FD(Full Duplex)
- 4800 to 3Mbps serial data rate. 16C550 compatible. 256-byte FIFOs
- Industrial temperature(-40 °C to 85 °C) operation.
- Flexible design with DB-9 connectors and cable.
- Termination Resistor by jumper setting.
- ESD up to 15KV(Electrostatic Discharge) protection circuit to prevent system damage.
- 30μ" golden finger, 3-year warranty.
- Industrial design, manufactured in innodisk Taiwan

### Mechanical Drawing



Pin Assignment

RS-485/RS-422 Full duplex	Pin	RS-485 Half duplex
TX-	1	D-
TX+	2	D+
RX+	3	
RX-	4	
GND	5	GND
	6	
	7	
	8	
	9	

### Specifications

Form-Factor	mPCIe
Input I/F	PCI Express 2.0 x 1
Output I/F	RS-422/485
Output Connector	DB-9 x 2
TDP	0.33W (3.3V x 100mA)
Dimension (WxLxH)	30 x 50.9 x 8.25 mm
Temperature	Operation: W/T: -40°C ~ +85°C Storage: -55°C ~ +95°C
Environment	Vibration: 5G @ 7~2000Hz, Shock: 50G @ 0.5ms
Notes	Please download driver from MyInnodisk website. Windows: XP(32 bit), 7(32/64 bit), 8/8.1(32/64 bit), 10, WES7, CE7.0 Linux: Kernel 2.6.x and above.(We can provide Linux source for modification.)

#### Headquarters (Taiwan)

5F., No.237, Sec. 1, Datong Rd.,  
Xizhi Dist., New Taipei City 221,  
Taiwan

Tel: +886-2-7703-3000  
Email: sales@innodisk.com

#### Branch Offices:

##### USA

usasales@innodisk.com  
+1-510-770-9421

##### Europe

eusales@innodisk.com  
+31-040-3045-400

##### Japan

jpsales@innodisk.com  
+81-3-6667-0161

##### China

sales\_cn@innodisk.com  
+86-755-2167-3689

#### www.innodisk.com

© 2018 Innodisk Corporation.  
All right reserved. Specifications  
are subject to change without  
prior notice.

November 24, 2022

### Order information

**EMP2-X202-W1(Wide Temp.)**  
mPCIe to 2 x 422/485 Module