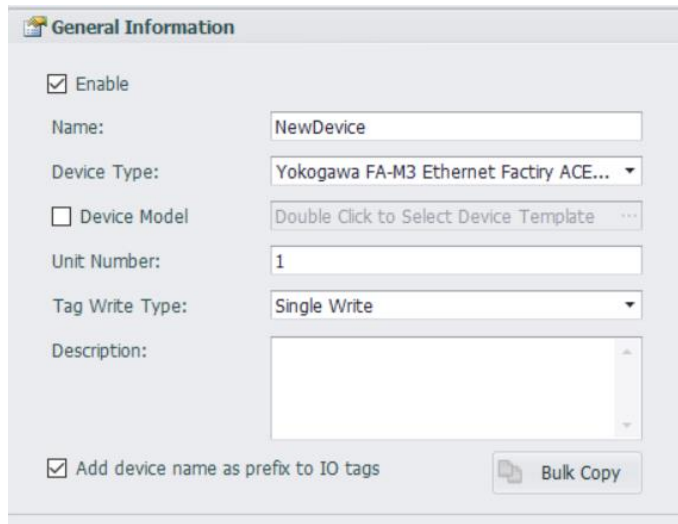


This document explain how to use gateway to connect to Yokogawa FA-M3 PLC.

Edgeline Studio Configuration

1) Add device

Serial:



General Information

Enable

Name:

Device Type:

Device Model

Unit Number:

Tag Write Type:

Description:

Add device name as prefix to IO tags

Device Type: Yokogawa FA-M3

Unit Number: PLC's station number.

Ethernet:

Enable

Name:

Device Type:

Device Model:

Unit Number:

Tag Write Type:

Description:

Add device name as prefix to IO tags

TCP/IP

IP/Domain:

Port Number:

Extention Properties

Device Address (if other than Unit Number):

Use ASCII Protocol:

Use UDP:

Device Type: Yokogawa FA-M3

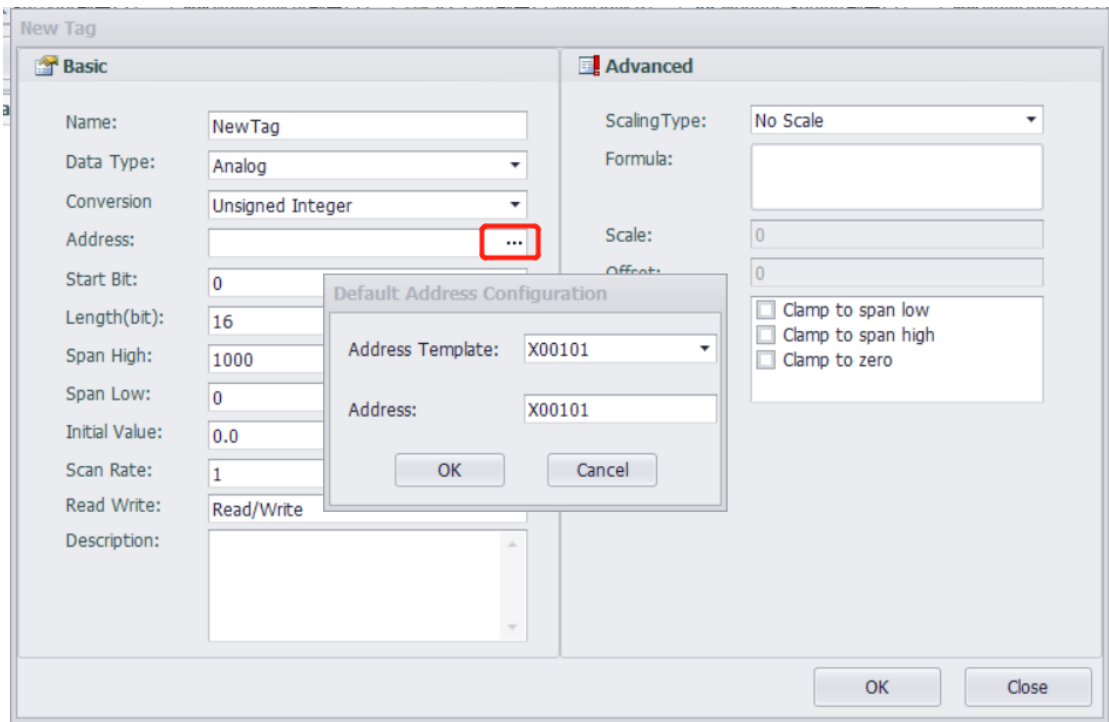
Unit Number: Anyone is OK. No meaning in Ethernet.

IP and Port: PLC's IP and communication port.

Use ASCII Protocol: 1-Yes, 0-No

Use UDP: 1-Yes, 0-No

2) Add tags



Parameter	Date Type	Description	Address format
B	Analog	File Register	B00001
CI	Analog	Counter, Value (Count Up)	CI0001
CP	Analog	Counter, Value (Count Down)	CP0001
CS	Analog	Counter Preset Value	CS0001
D	Analog	Data Register	D00001
R	Analog	Common Register	R0001
TI	Analog	Timer, Value (Count Up)	TI0001
TP	Analog	Timer, Value (Count Down)	TP0001
TS	Analog	Timer, Preset Value	TS0001
V	Analog	Index Register	V001
W	Analog	Link Register	W00001

XW	Analog	Word Input	X00101
YW	Analog	Word Output	Y00101
Z	Analog	Special Register	Z0001
C	Discrete	Counter Relay	CU0001
E	Discrete	Common Relay	E0001
I	Discrete	Internal Relay	I00001
L	Discrete	Link Relay	L00001
M	Discrete	Special Relay	M0001
T	Discrete	Timer Relay	TU0001
X	Discrete	Input Relay	X00101
Y	Discrete	Output Relay	Y00101