
01 Getting Started

last modified by admin

on 2022/06/15 15:37

Table of Contents

PIStudio	3
Requirement	3
Download	3
Installment	3
PISuite (Toolkit)	7
Getting Started	9
Create new project	10
Add screen	13

PIStudio

Our company is a high-tech company specializing in product research, development and sales in the field of Automation. The series of industrial human-machine interface products produced by the company have obtained a couple of Software & Hardware intellectual property rights. At present, the products are widely used in machinery, metallurgy, chemical engineering, Petroleum and other industry field, the company's products are exported to European and American countries and regions.

The HMI configuration software help can help you master the basic operation and usage of the configuration software more quickly, and assist you in completing your work successfully. If you have any questions, please contact with Hunter via email: support@we-con.com.cn .

The following steps will show how to install PIStudio.

Requirement

PIStudio installation package downloaded.

- Windows 7 (32bit / 64bit)
- Windows 8 (32bit / 64bit)
- Windows 8.1 (32bit / 64bit)
- Windows 10 (32bit / 64bit)

Download

Official Website <https://ftp.we-con.com.cn/Download/Software/PIStudio20211210.zip>

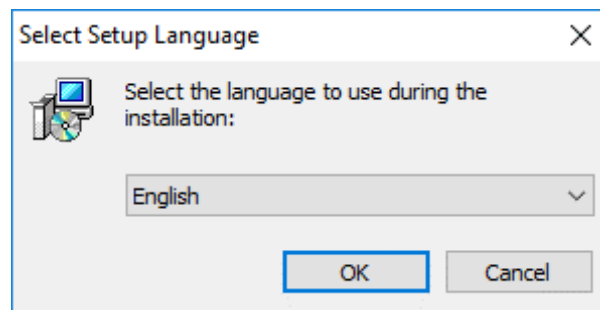
Google Drive <https://drive.google.com/open?id=1Im7YS2rtnRI7yFIHmqHDVPBUyWahqSXN>

ceshi

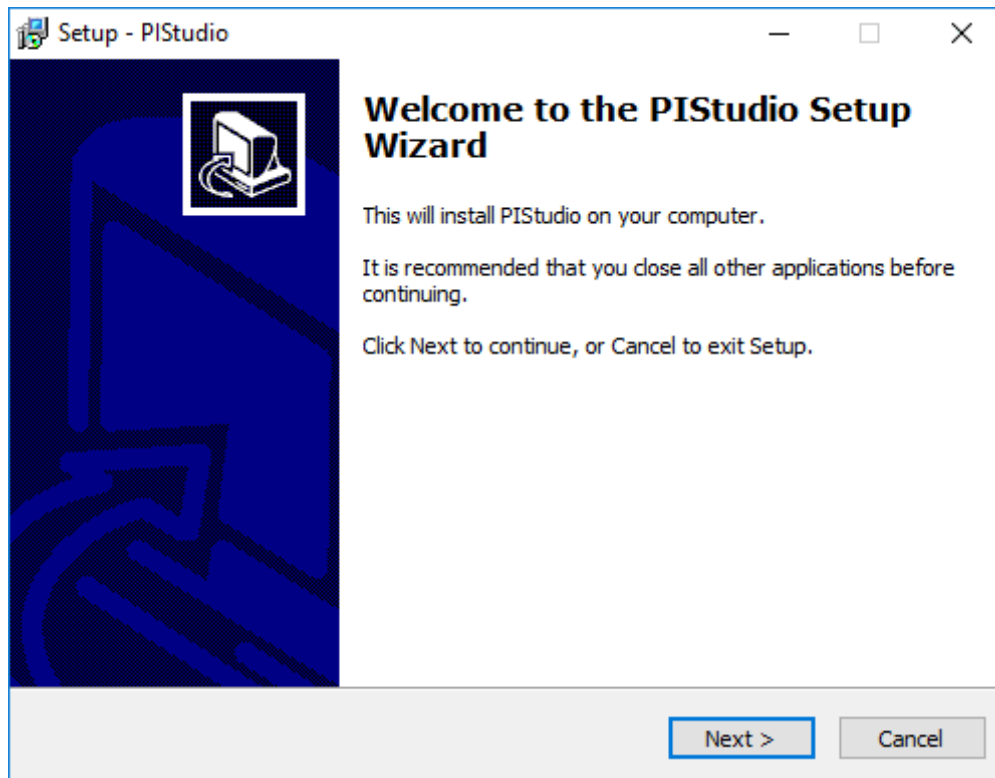
Installment

Steps:

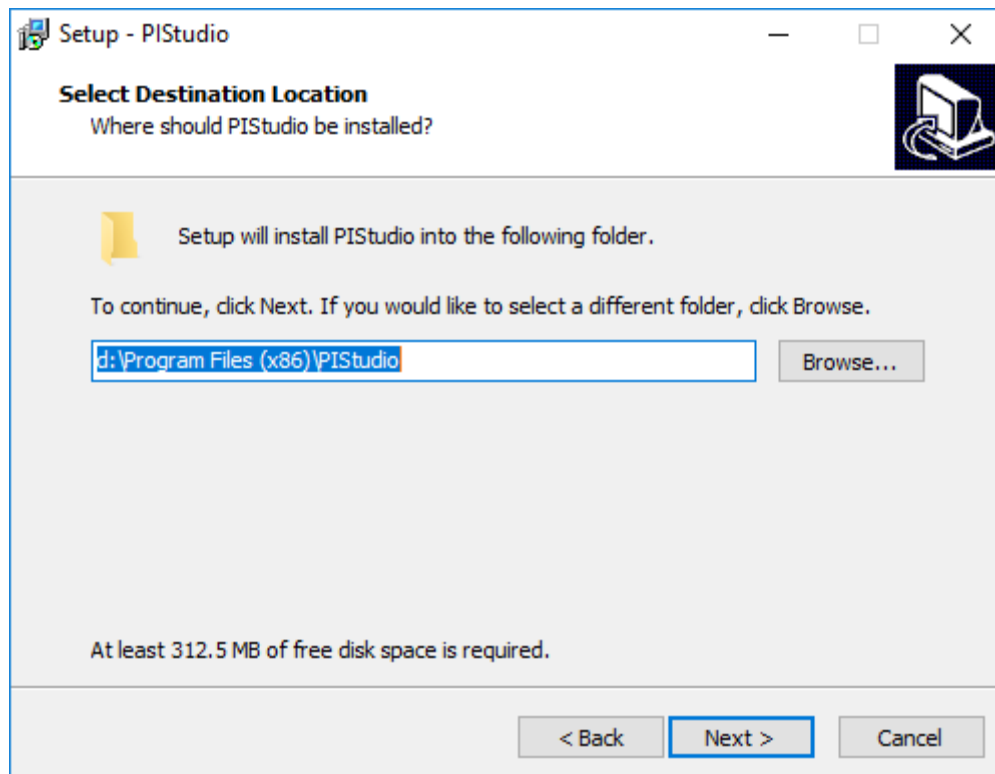
1. Decompress downloaded file get PIStudio installation package.
2. Select PIStudio installation package.
3. Right click it.
4. Select "Run as administrator".
5. Select language for PIStudio interface, it supports Chinses (Simplified), Chinses (Traditional), English, Italian, Russian.



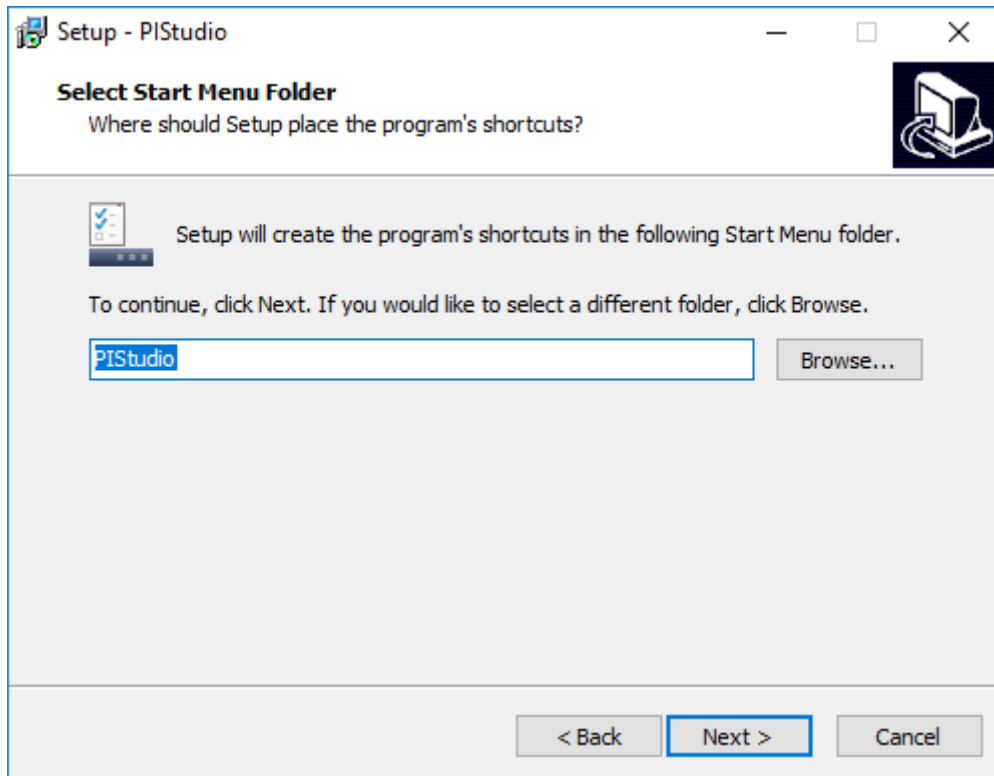
1. Click "Next".



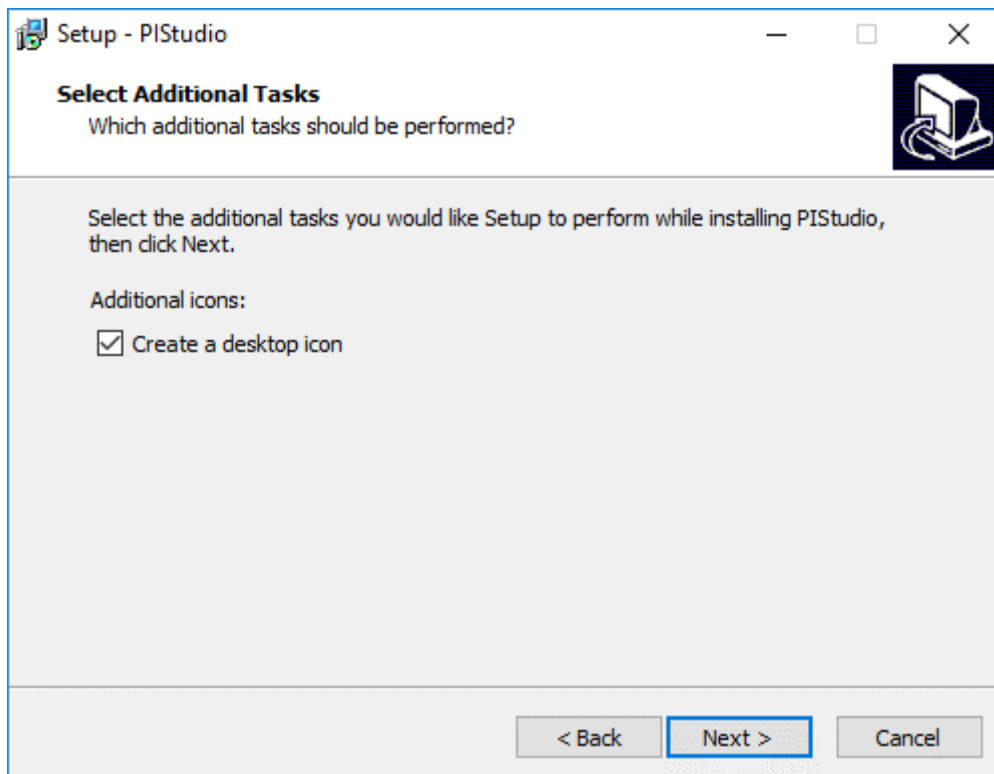
1. If there is a previous version of PISudio on the PC, please remove it before installation.
2. Select a folder for PISudio installation, or use the default folder. Click "Next".



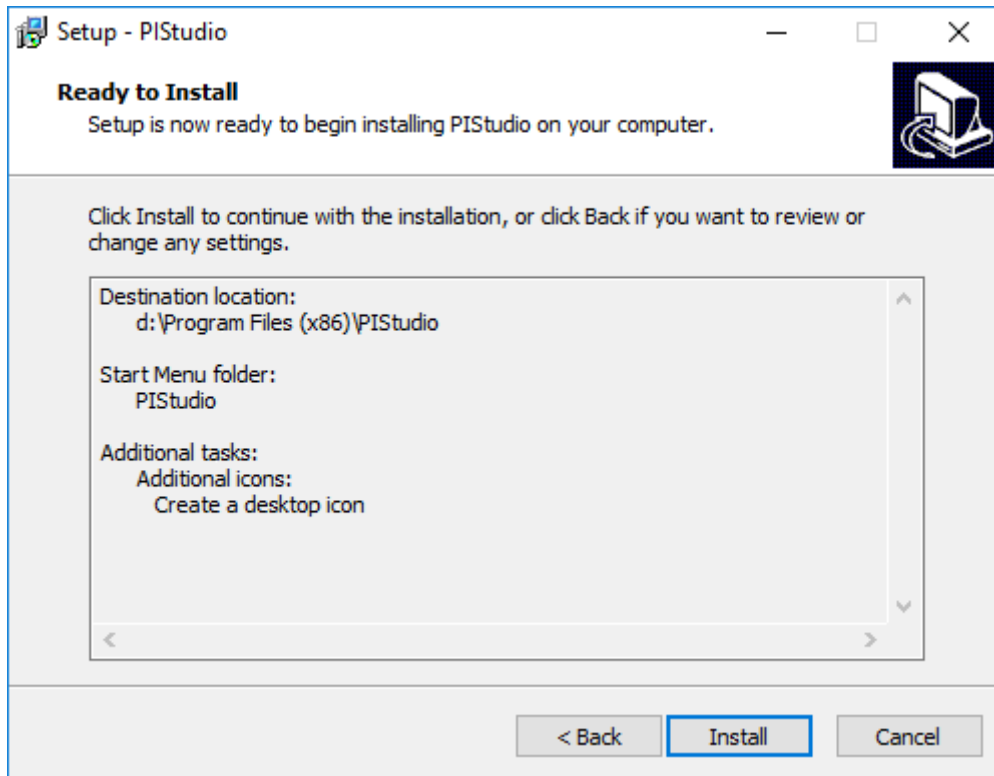
1. Click "Browse" to specify a folder, or use the folder suggested by the program, click "Next" to continue the installation process.



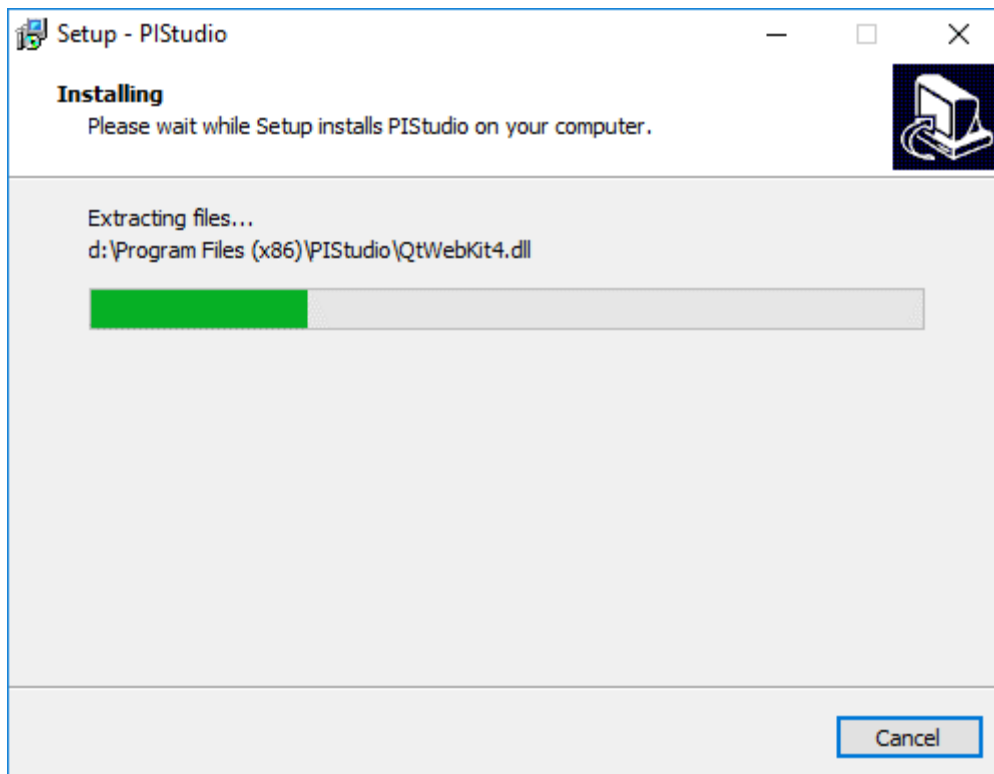
1. Select additional tasks, for example: "Create a desktop icon". Click "Next".



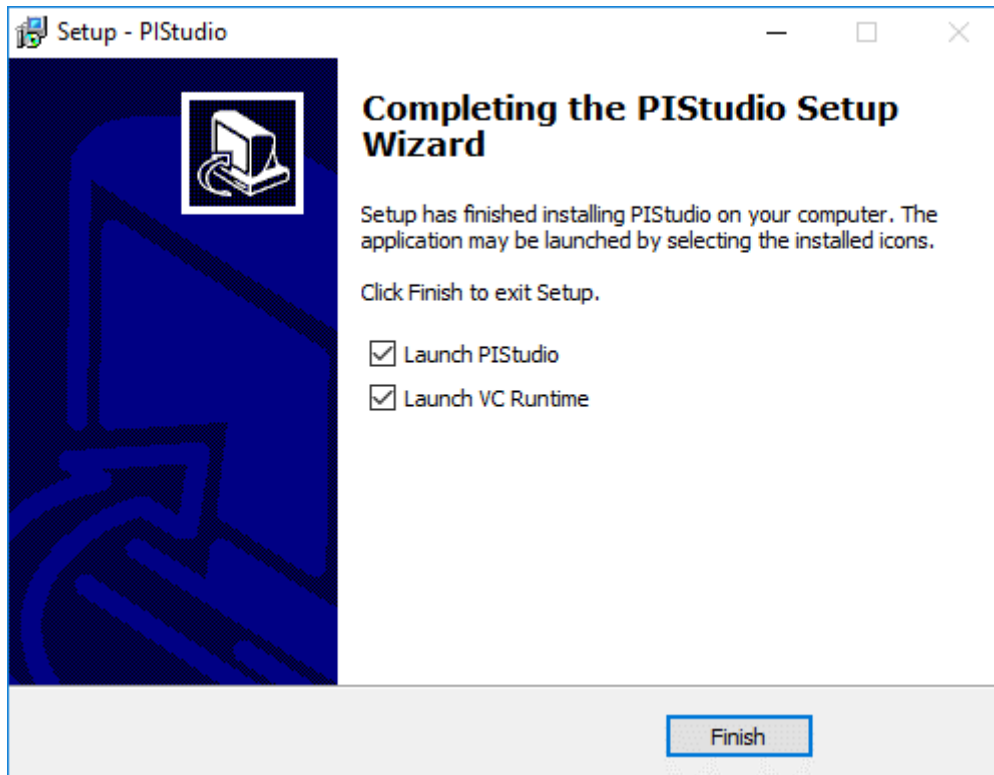
1. At this stage, all settings have been completed. Please check if it is correct. If there is any need to re-select the part, please press "Back". If all is correct, please press "Install" to start the installation process.



1. Installer execution



1. Please check "Launch VC Runtime" to install "Microsoft Visual C++2008" in your PC.



Result: Users could see shortcuts to PISudio's features in the "Start" » "All Programs" » "PISudio" directory.

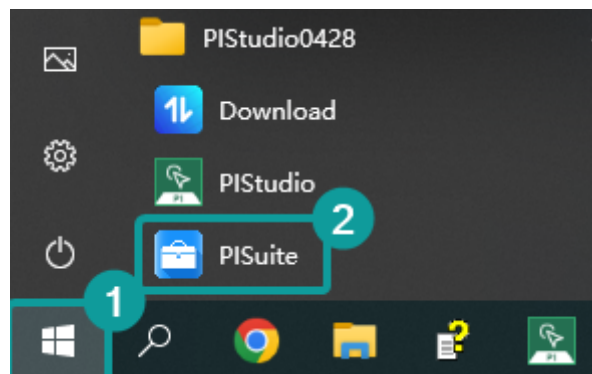
#Note:

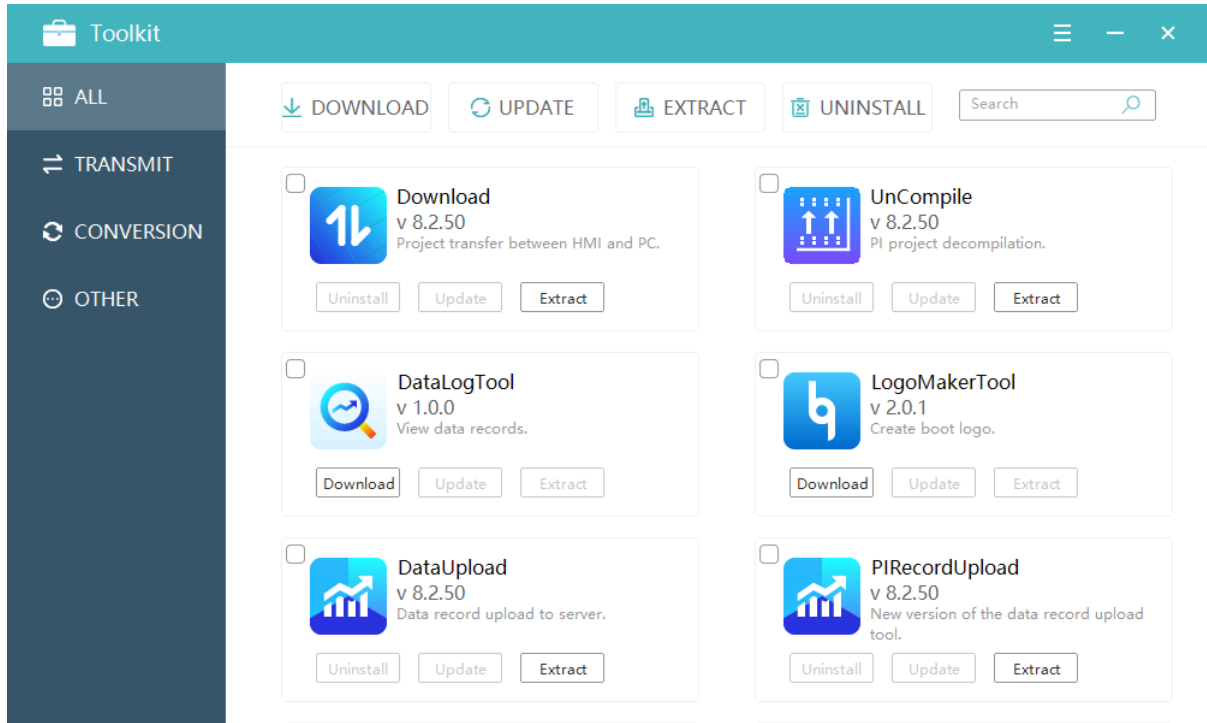
- In case of the incompatible problems, it is suggested to install and run PISudio as administrator.
- Microsoft Visual C++ 2008 provides the necessary runtime components for PISudio

PISuite (Toolkit)

In addition to being editable on PISudio, HMI has other related components that can be used.

Open the "Start" ->"All Programs" ->HMI Editorinstallation directory to quickly open functional tool.

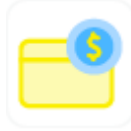




The tools of toolkit are as follows.

Tool	Icon	Function
Download		Get information about HMI such as upload and download
Decompile		After reading the project from HMI to PC, you need to decompile
DataLogTool		To view the "DB" such as file data records, alarm records
LogoMakerTool		To make the boot logo of PI series HMI.
DataUpload		Upload data record ,alarm records or operation records
PIRecordUpload		Monitor devices in real time, update and export data records

[CreatInstallmentPwd](#)



The installment payment mode is dynamic password. You

PIMonitor



LAN monitoring of 3000 series HMI screen.

[Levi2PI](#)



Convert LEVI series engineering to PI series engineering.

HMIPrjStdNeutral



Project conversion between PI standard and PI neutral ver

PIRptEditTool



Convert the record files generated by LEVI or PI to the spe

HMIProjectReportTool



Analyze and generate HMI engineering report.

#Note: HMI supports the use of USB and Ethernet to download/upload project and record files.

Getting Started

This chapter provides a quick and precise introduction of PIStudio.

It does not contain a comprehensive list of all functions, but it only takes 6 simple steps to create a new project.

Operation

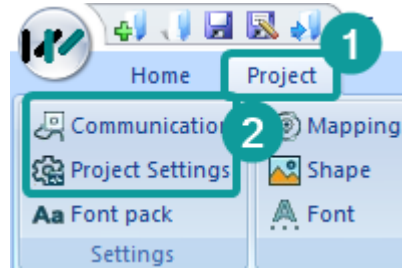
1. [Create a new project](#)

Description



Click the "New Project" in the upper left corner of the software to create a new

1. [Project Settings](#)



1. Project design
1. Compile and save
1. [Simulation](#)
1. [Download project](#)

Click "[Communication](#)" and "[Project settings](#)" to set communication protocol and create screens and place the objects you need. You could draw your own project objects.

You need to "[compile](#)" every project before downloading to the HMI.

When uploading a project from the HMI to the PC, you need "[Decompile](#)".

PISStudio provides two simulation modes: offline simulation and online simulation.

1. **Offline:** Simulate the operation of the HMI and PL on the computer. There is no connection to the HMI.
2. **Online:** Simulate the operation of the HMI and PL on the computer, but with a connection to the HMI.

Download is the last step. After completing the download, the HMI can run the project.

Create new project

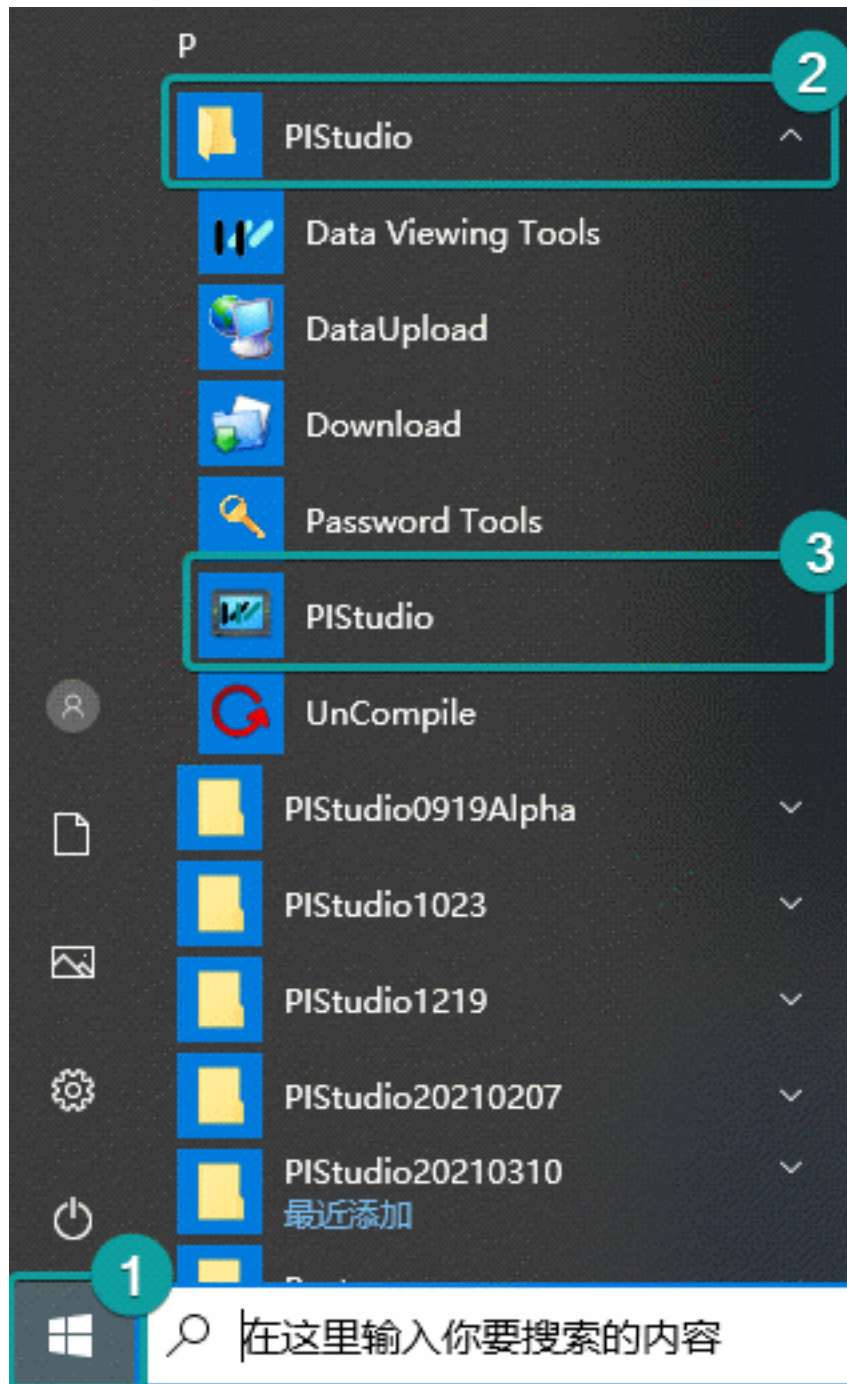
The following steps will show how to start PISStudio and create a project.

Requirement

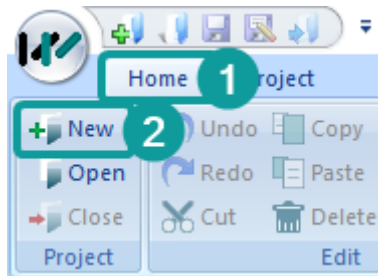
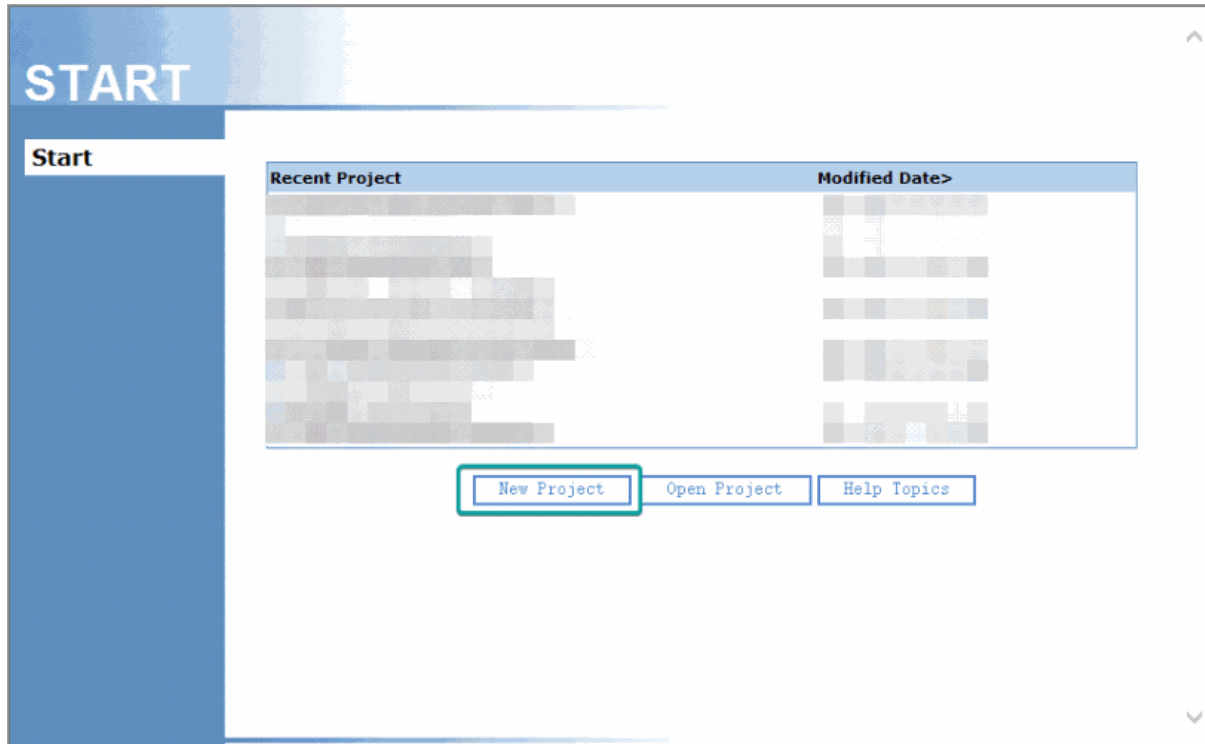
PISStudio programming software is installed.

Operating Procedure

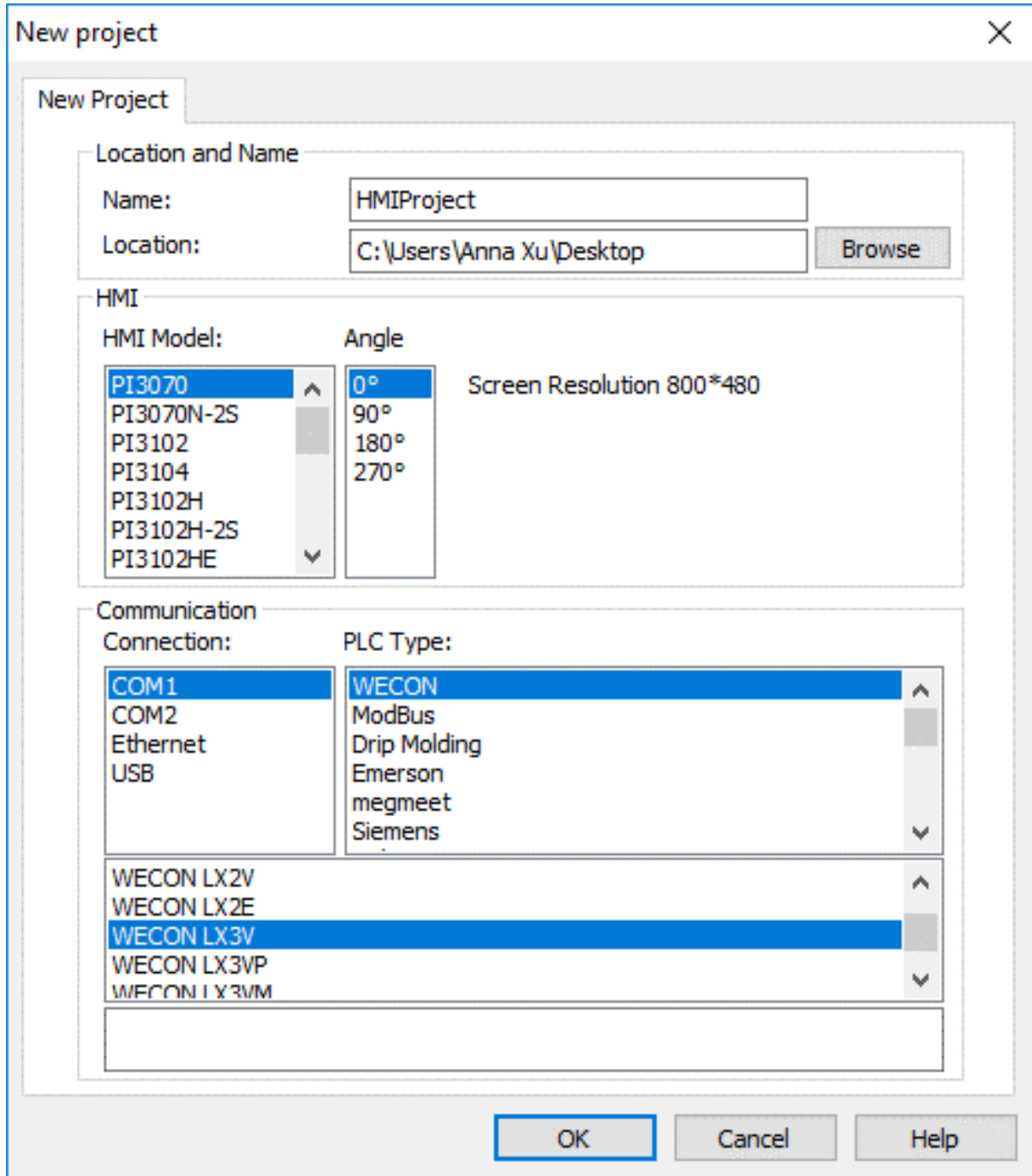
1. Start PISStudio software by clicking the icon, or from the Start Menu.
2. Find "PISStudio" folder.
3. Click "PISStudio" icon to start software.



1. Click "New project".



1. Configure project name, project path.
2. Select HMI model and communication protocol.
3. Click "OK" to save setting.



Result

- User could find a folder named HMIProject on the desktop.
- In the folder user could find a file with a suffix named ".pi". Double click the file to open the project.

Add screen

The following steps will show how to create and rename screens in PIStudio.

New screens, which are still blank, could be created using the "Common object". User could choose different objects to design screen according to project's requirements.

Requirement

The "Quick_Start" project is open.

Steps:


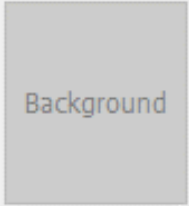
1. Create a new process screen: Clicking "New" will appear "New screen" setting.



1. Set screen parameter in "New Screen", such as screen number, screen name, background type.

New screen [X]

General
Screen No.: Name:

Background
 Color
 Shape  

Sub-screen
Width: Height:

Overlapping screen
Bottom screen:

Timing toggle screen

User Permission

1. After making a new screen, user could insert objects in screen. For example, button and trend.
2. Add button object in screen.
3. Set button object parameters, such as read address, mode etc.

Bit switch

General Text Graphic Security Animation

Read-write

Write Address Edit

Read Same read-write address

Read Address Edit

Mode

Set OFF Set ON Momentary Switch

Display

Inverted Display Quick Read

Blink

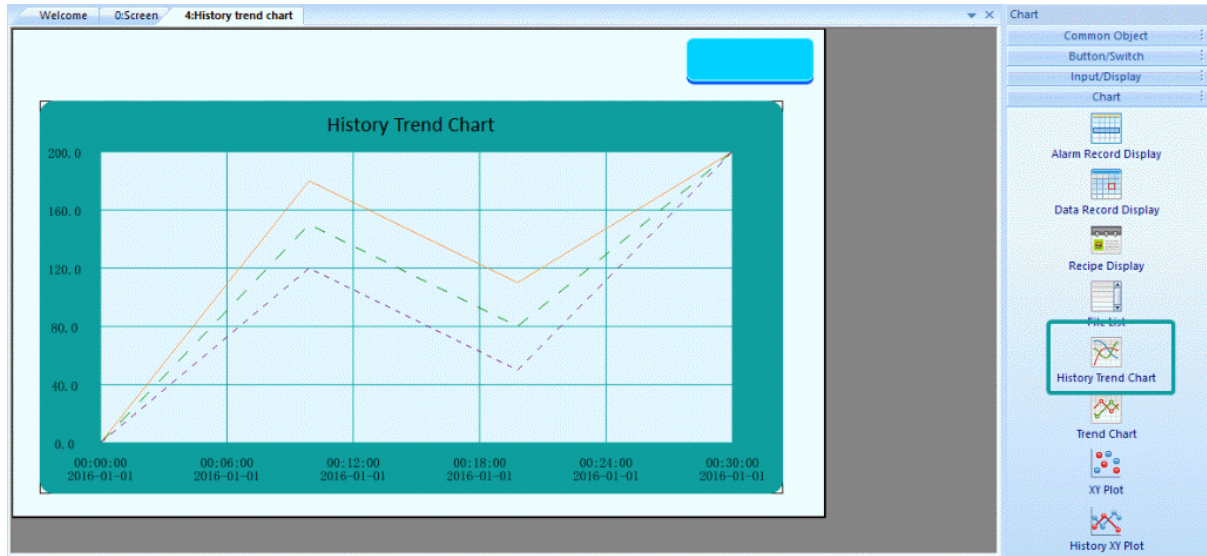
Indirect Addressing

Read Address

Write Address

OK Cancel Help

1. Add "Trend Chart" from "Chart".



1. And "Function key" for screens switch.

Result

Do a project screen with bit button, one chart display object, and one Function key for switching screen