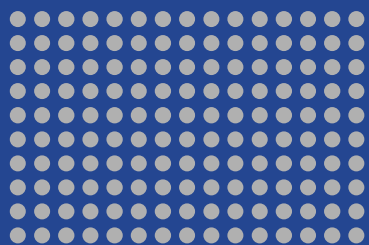


2022

Company Profile

Professional Network Technology

Shanghai Baud Data Communication Co., Ltd.



Contents

About Us

01



Product Introduction

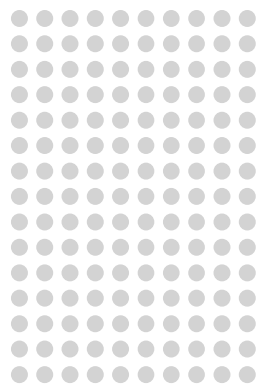
02



Industry Application

03





01 Part

BDCOM

One of the leading suppliers of networking solutions in China.
Recognized National Star Enterprise of software development.



29 years of Technological Innovation

1994

Established

\$300M

Turnover

1000+

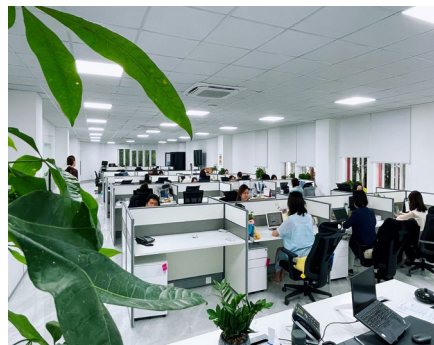
Employees



Headquarters



R&D



Marketing



Conference



Showroom

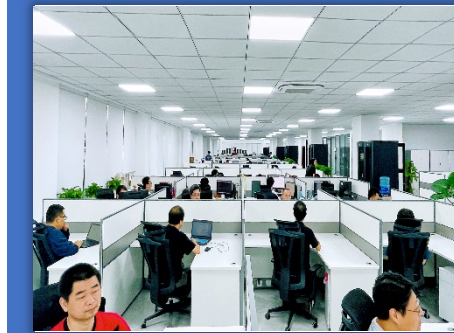
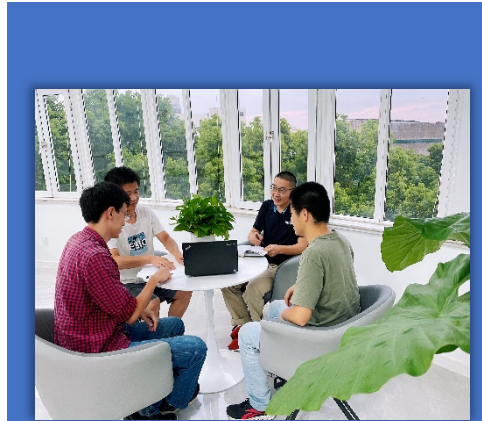
Headquarters



- 5S office management for motivated and talented BDCOMers

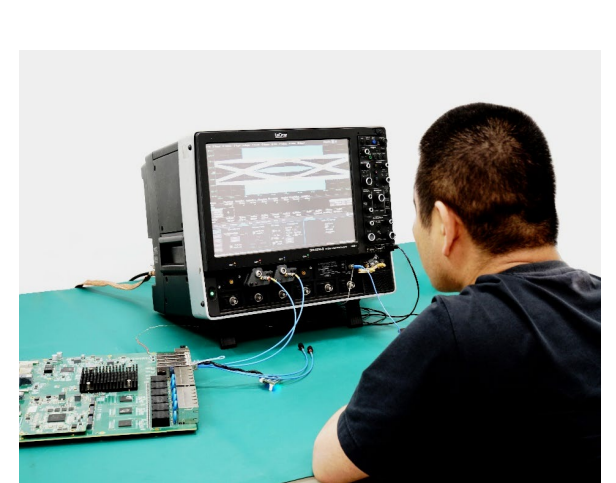
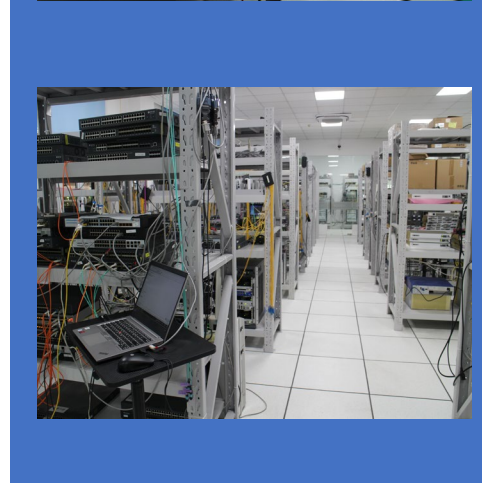
R&D Center

- Experienced PhD and master engineers
- A number of product invention patent technologies, software copyrights and high-tech achievement transformation projects



Test Center

- Full-equipped reliability testing instruments
- One-stop reliability testing service, undertaking hardware testing services



Production Bases



博达通信

BDCOM

2



上海泰视通信技术有限公司
Shanghai TSYAAN Communication Technology Co., Ltd.
博达科技 · 博达信息

Shanghai Jinshan High-end Manufacturing Center

Business scope: pilot test, mid-to-high-end products

Plant area: 35,000 m²

Production capacity: 1 million sets per year



CMMI5



CE

FC

UL

ANATEL

CB

Production Bases

Shanghai Jinshan High-end Manufacturing Center





Production Bases

Kunshan Manufacturing Center

Business scope: industrial products
and customized products

Production Bases

Kunshan Manufacturing Center





Production Bases



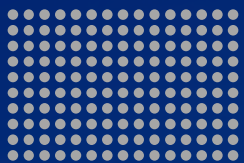
Wuhan Optics Valley Manufacturing Center

Business scope: mid-to-low-end devices,
OEM/ODM products

Production Bases

Wuhan Optics Valley Manufacturing Center





Milestones

1994
Established
Developed the
China's first
X.25 card.

1998
First mass production
of router.
2000
Established R&D
center in Zhangjiang;
developed BDROS.

2005
R&D of high-end
products.
Marched into
overseas markets;
set up multiple
offices.

2010
Settled
Manufacturing
Center in Songjiang.
2014
New office building
completed;
Launched a full set
of GPON.

2018
One Belt One
Road Overseas
Projects Over
100 Million Yuan
Established
manufacturing
center in
Jinshan.

2019
Kunshan Manufacturing
Center completed.
2020
Wuhan Optics Valley
Manufacturing Center
completed.
A new generation of
router launched.

For **29** years, BDCOM has insisted on the road of independent research and development, and has continuously created new value for customers.

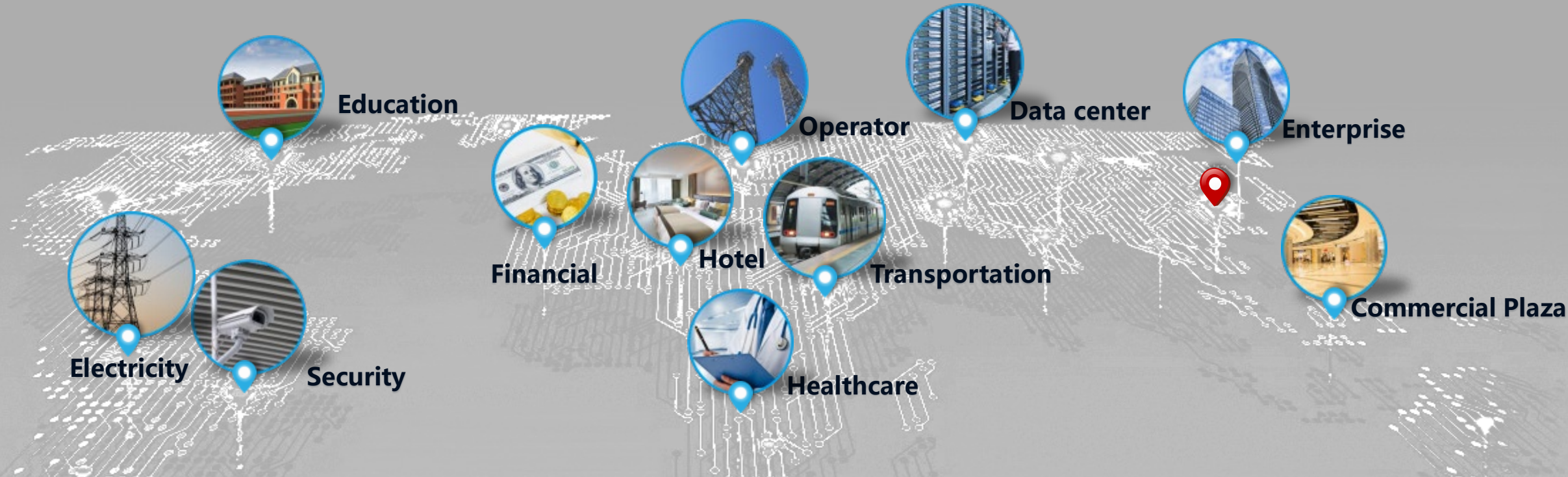
Qualifications



Shanghai High-tech Enterprise
Shanghai Recognized Enterprise Technology Center
Key Enterprise of National Torch Program Software Industry
Shanghai Innovative Enterprise
Top 100 Enterprises of High-tech Achievements Transformation
Demonstration Enterprise of Shanghai Foreign Trade
Independent Brand
Shanghai Star Software Enterprise
China's top 100 E-government IT Enterprises
The most potential IT company



Business Distribution



- BDCOM's products and solutions are widely used in power, transportation, government, education industries.
- With over 20 years of technology precipitation, product innovation and strong scene adaptability can quickly meet the needs of diverse markets.
- 8 overseas branches serve large telecom operators worldwide.
- BDCOM products are sold in nearly 100 countries and regions.
- Has participated in 30 more overseas operator network projects.
- In recent years, BDCOM's overseas sales have grown rapidly at a rate of 50% per year.

Partners

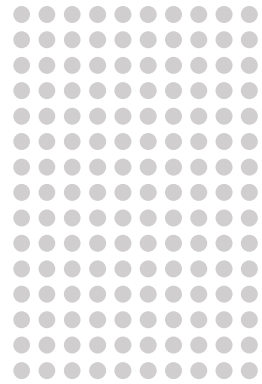


Not fully included.....

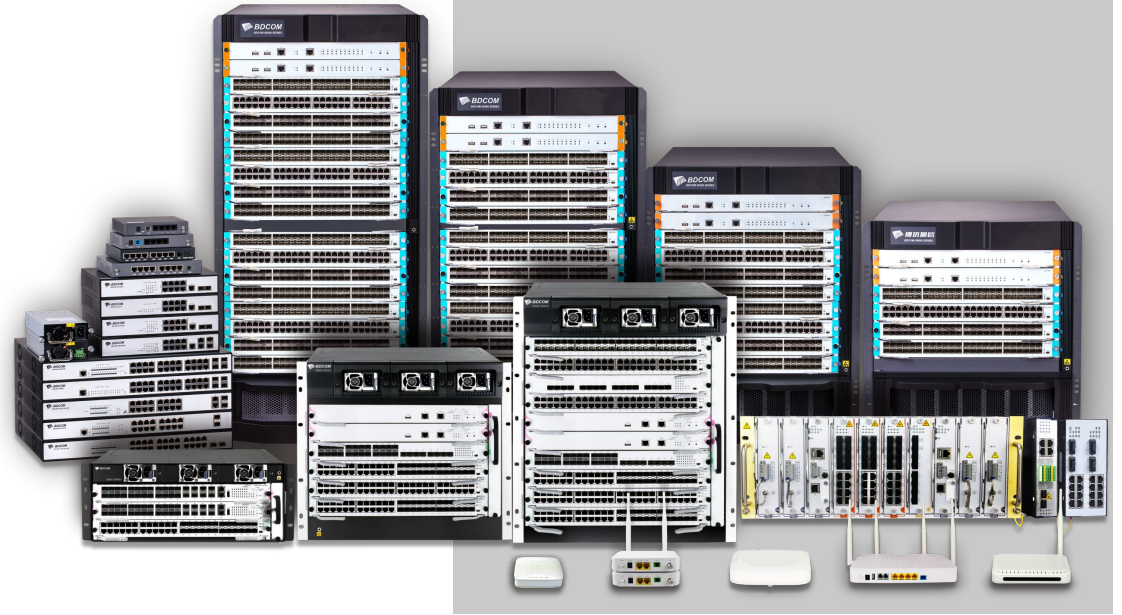
International Business



Global events: Exhibition, Seminar, Roadshow



02 Part



Products & Solutions



Switch



Industrial
product



xPON



Network
Security



Router



Wireless



COP

Switch



Products and Solutions

One-stop switching solution covering from core, aggregation to access layer, Rich portfolio meeting all the requirements from different industries.



Data Center Switch

S9500, S5800

Core Switch

S8500E

Layer-3 Switch

S5600, S3900/PoE,
S2900/PoE

Access Switch

S2500/PoE, S2200/PoE
S1500/PoE, S1200/PoE
S1000/PoE



Data Center Switch

S9500



S9518

S9514

S9510

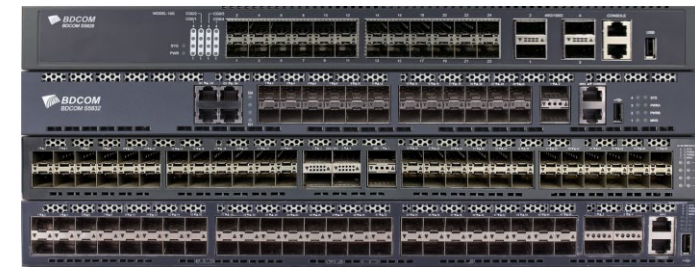
S9506

Carrier-level reliability

Superhigh throughput

Innovative virtualization

S5800



S5828

S5832

S5864

S5864H

Campus Network Core Switch



Campus network core switch

- Carrier-level IP MAN aggregation switches
- Large campus and enterprise core switches

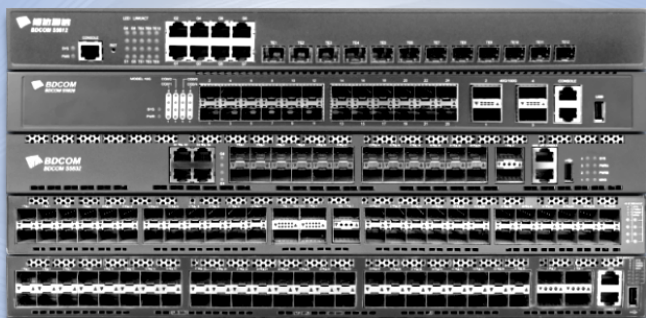
S8500E

- Oriented for 40GE platform and support carrier-level capacity and expandability.
- 99.999% high-usability.
- Innovative BVSS (BDCOM Virtual Stacking System) technique.
- Provide complete layer-2 and layer-3 multicast, routing, MPLS VPN and IPv6 solutions.

10GE Switch

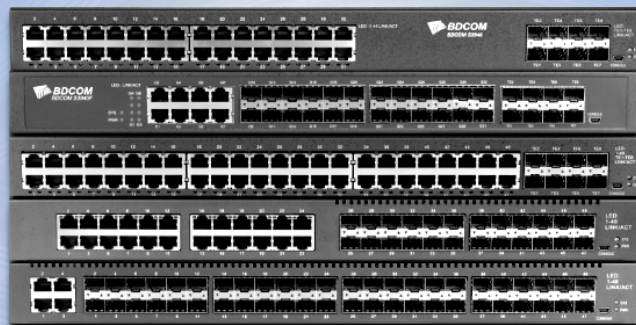
- Carrier-level reliability
- BVSS virtualization
- Rich 10GE port combinations

🎯 Full 10GE switches



- S5832
- S5612
- S5864
- S5828
- S5864H

🎯 L3 10GE switches



- S3930
- S3954
- S3938F
- S3954M
- S3956F

🎯 L3-Lite 10GE switches



- S2936F
- S2954
- S2952C
- S2928E
- S2928EF

Access Switch

Various port combinations
Plug and play
Cost-effective



Unmanaged



Rich product series
Advanced functions
Easy configuration



Managed



Large cache and no jam
High-quality full-load
power supply



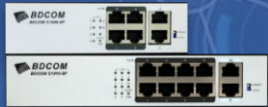
PoE Series



PoE Switch

BDCOM wide range of PoE product line with top reliability & functionality.

100M



- Support video transmission
- 250M over-long transmission
- 802.3AF/AT
- AF full-load power supply
- Flexible management & maintenance
- Rich QoS policies
- Complete PoE power supply

Gigabit uplink



Full gigabit



Unmanaged

10GE



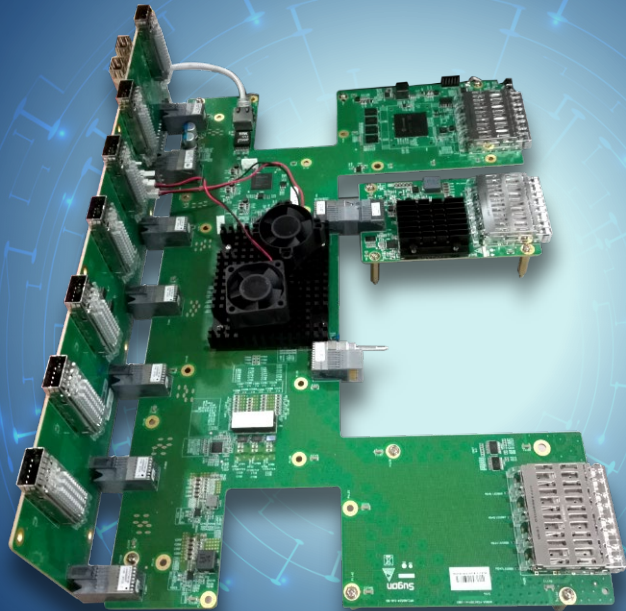
Gigabit



Managed

Customized Products

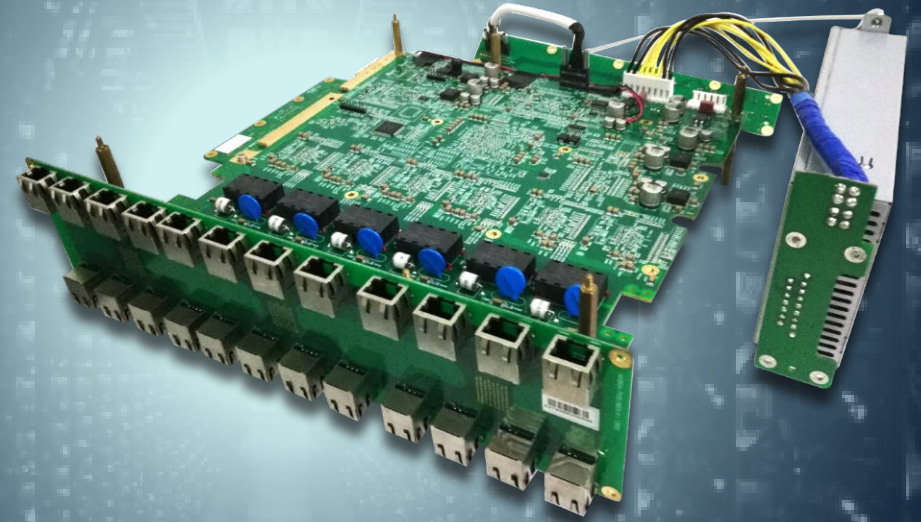
©FCOE board



Server
switch board

Dedicated device

©HP/WRJ project



Industrial

Products and Solutions

BDCOM has over **600 types** of industrial Ethernet switches widely applied in the fields of rail transit, bridge, tunnel, smart grid, wind photovoltaic power, factory automation and industrial monitoring.

Smart grid solution

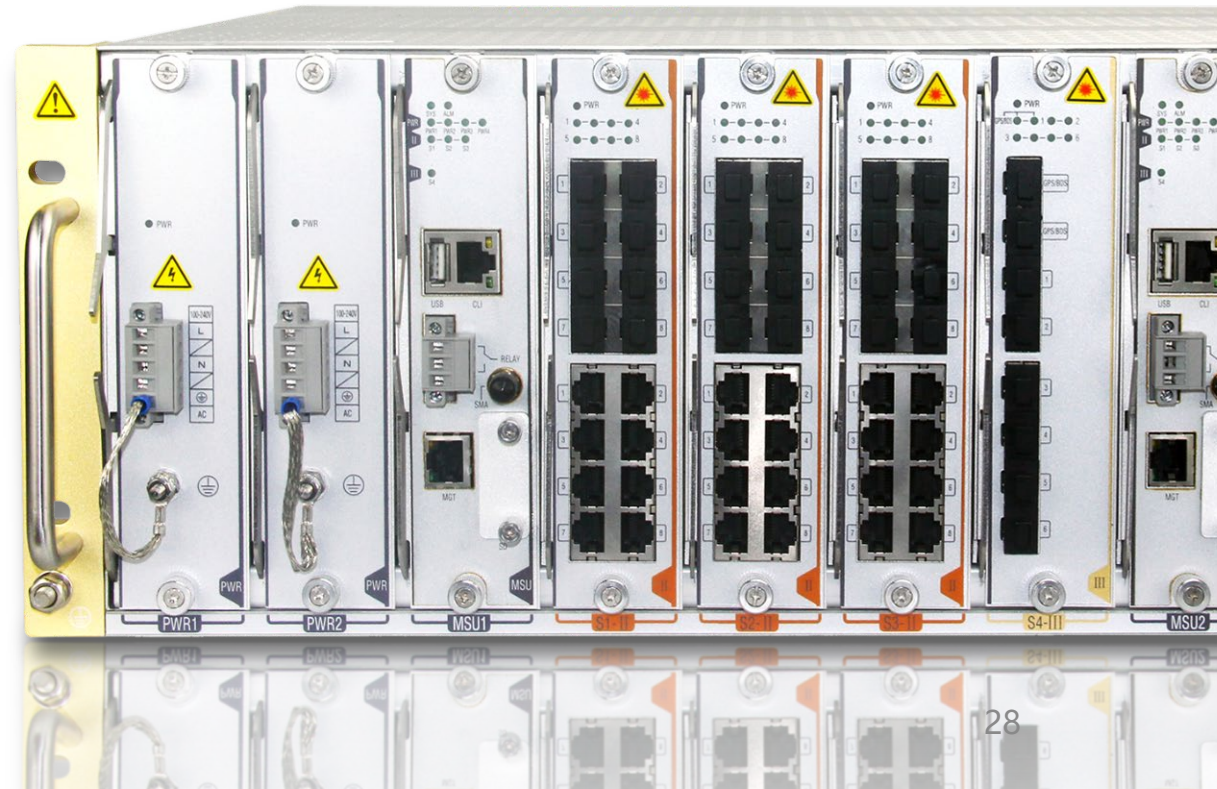
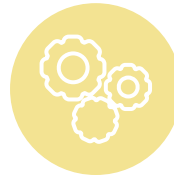
Intelligent rail transit solution

Sharp Eyes Project Solution

Integrated pipe gallery solution



Industrial switches, industrial routers,
Industrial PON products, industrial fiber
transceivers...





TNM4000

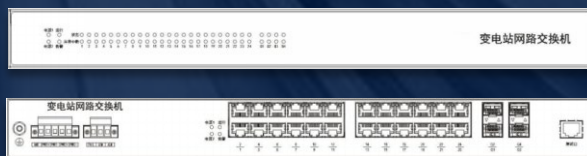
High-end Distributed Chassis Industrial Switch

Industrial Switch



TNM6000

High-end Rack-mounted Industrial Switch



Patriot 200

Domestic "Four Unification" Industrial Switch

⚡ TNM4000

- Size: 4U/8U height, 19 inch rack mount
- Slots: 10/20 slots, up to 200 service ports
- Ports: Up to 8 10GE ports and 64 GE ports
- Power: N+M redundant fanless industrial power supply
- Operating temperature: -40°C~85°C
- IP40 protection, EMC 4A level, relay alarm, power failure alarm

⚡ TNM6000

- Size: 2U height, 8 slots, 19 inch rack mount
- Ports: Up to 8 10GE ports and 80 GE ports
- Multifunctional business module, flexible expansion
- Support PoE+, PoE++, EMC 4A level
- **The industry's top rack-mounted industrial switches**

⚡ Patriot 200

- Unified hardware structure
- Unified service standards
- Unified device management standards
- Unified operation and maintenance standards



Domestic key components and technologies

⚡ TCC4100 Series

- Anodic oxidation aluminum profile chassis, corrugated conduction heat dissipation design.
- Operating temperature $-40^{\circ}\text{C}\sim 85^{\circ}\text{C}$, IP40 protection, EMC4A level.
- Hundreds of models and specifications meet the highest certifications in the power, rail transit.

⚡ TNM4000 Series

- Anodic oxidation aluminum profile chassis, corrugated conduction heat dissipation design.
- Operating temperature $-40^{\circ}\text{C}\sim 85^{\circ}\text{C}$, IP40 protection, EMC4A level.
- Dozens of models and specifications to meet industry certifications such as power and rail transit.

⚡ IES2000 Series

- Anticorrosive aluminum alloy chassis, corrugated conduction heat dissipation design
- Operating temperature $-40^{\circ}\text{C}\sim 85^{\circ}\text{C}$, IP40 protection, EMC4 level.
- Applicable to industries such as energy, Sharp Eyes project, integrated pipe gallery, security monitoring.

⚡ IES200 Series

- 6, 10, 14-port DIN-rail series, with PoE.
- Operating temperature $-40^{\circ}\text{C}\sim 75^{\circ}\text{C}/85$, IP40 protection, EMC4 level.



TCC4100
DIN-Rail, slim DIN-Rail managed
Industrial Ethernet Switch



TNM4000
High-end L3 managed Industrial
Ethernet Switch

Industrial Switch



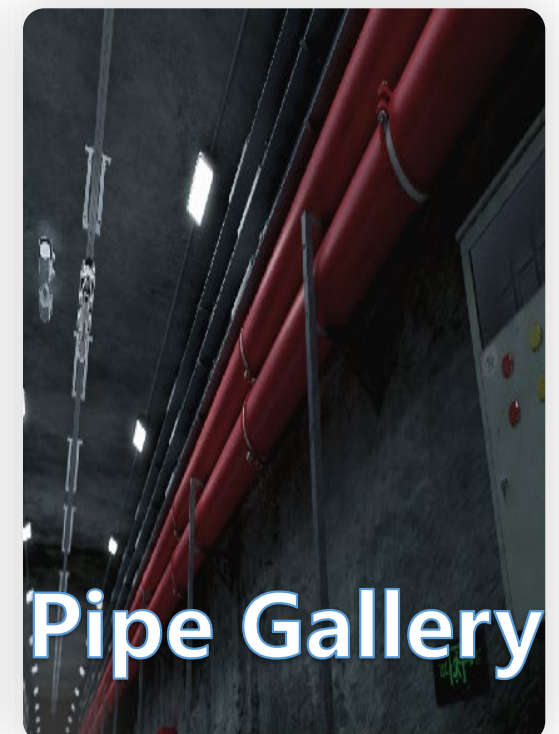
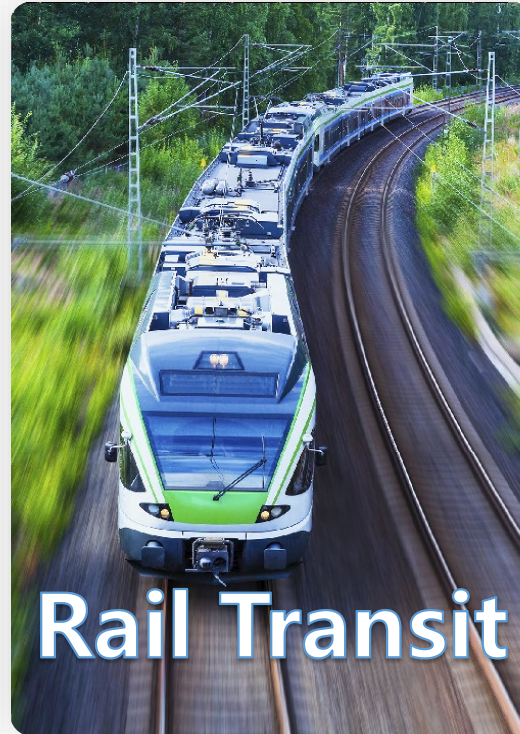
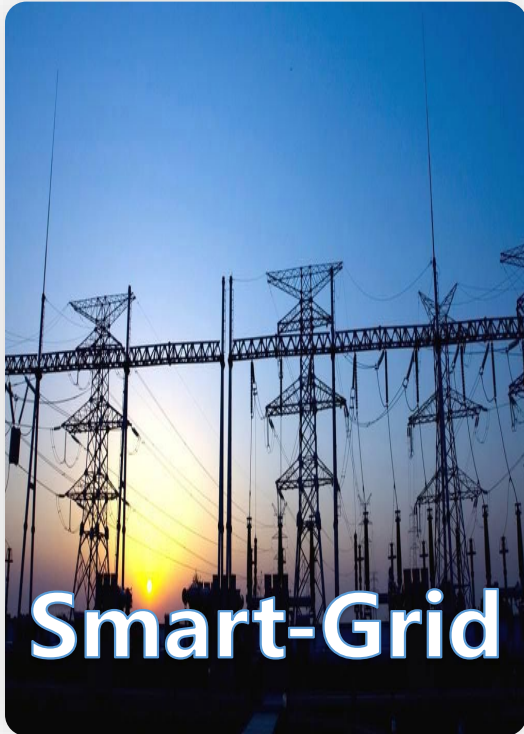
IES200
All-gigabit managed Industrial
Ethernet Switch



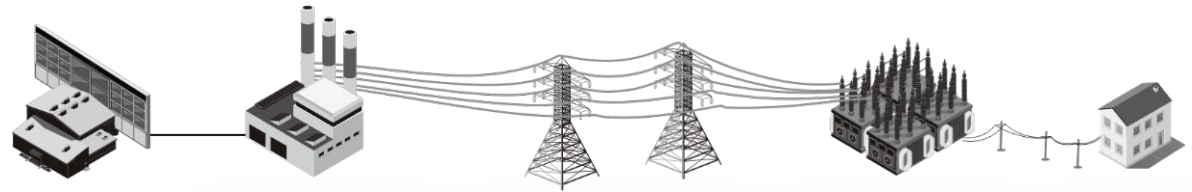
IES2000
Lite-L3 managed Industrial
Ethernet Switch



Industrial Network Solutions



Smart-Grid Solution



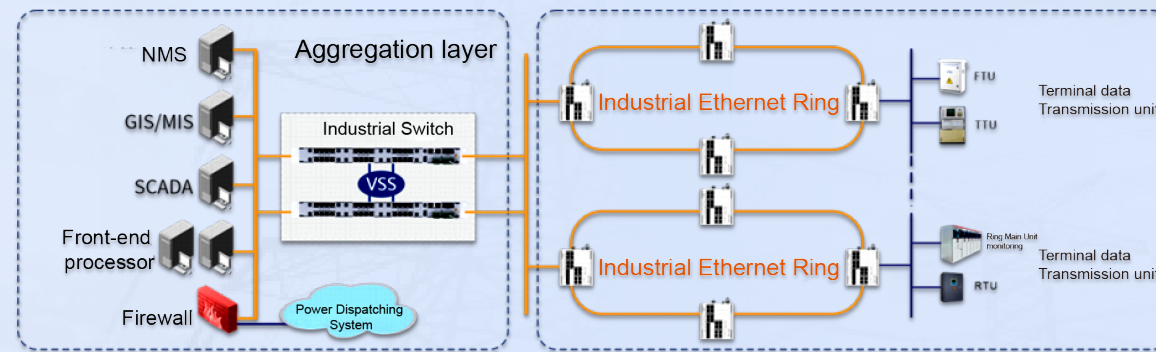
Generation

Transformation

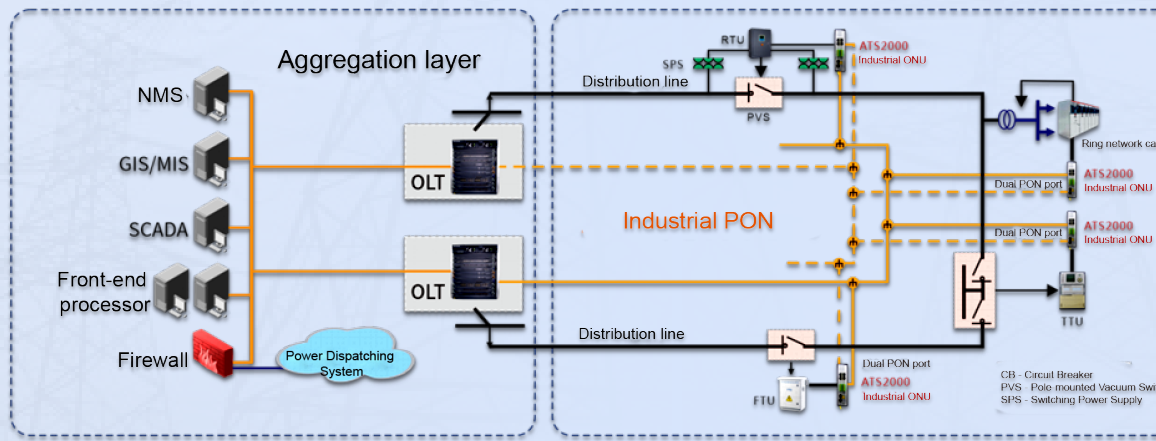
Distribution

Usage

China
Southern
Power Grid
Industrial Switch



State Grid
Industrial PON



- ✓ **High reliability**, self-healing in milliseconds
- ✓ **Anti-interference**, EMC4A
- ✓ **Real-time**, PTP1588 precise clock
- ✓ **Multi-service access**, optical Ethernet, RS232/485 serial port, POE power supply
- ✓ **Reliability**, dual PON ports, Type c hand in hand
- ✓ **Anti-interference**, EMC4A
- ✓ **Wide coverage**, easy to deploy
- ✓ **Light operation and maintenance**, strong security

Rail Transit Solution

Passenger Information System (PIS)

Firm and stable

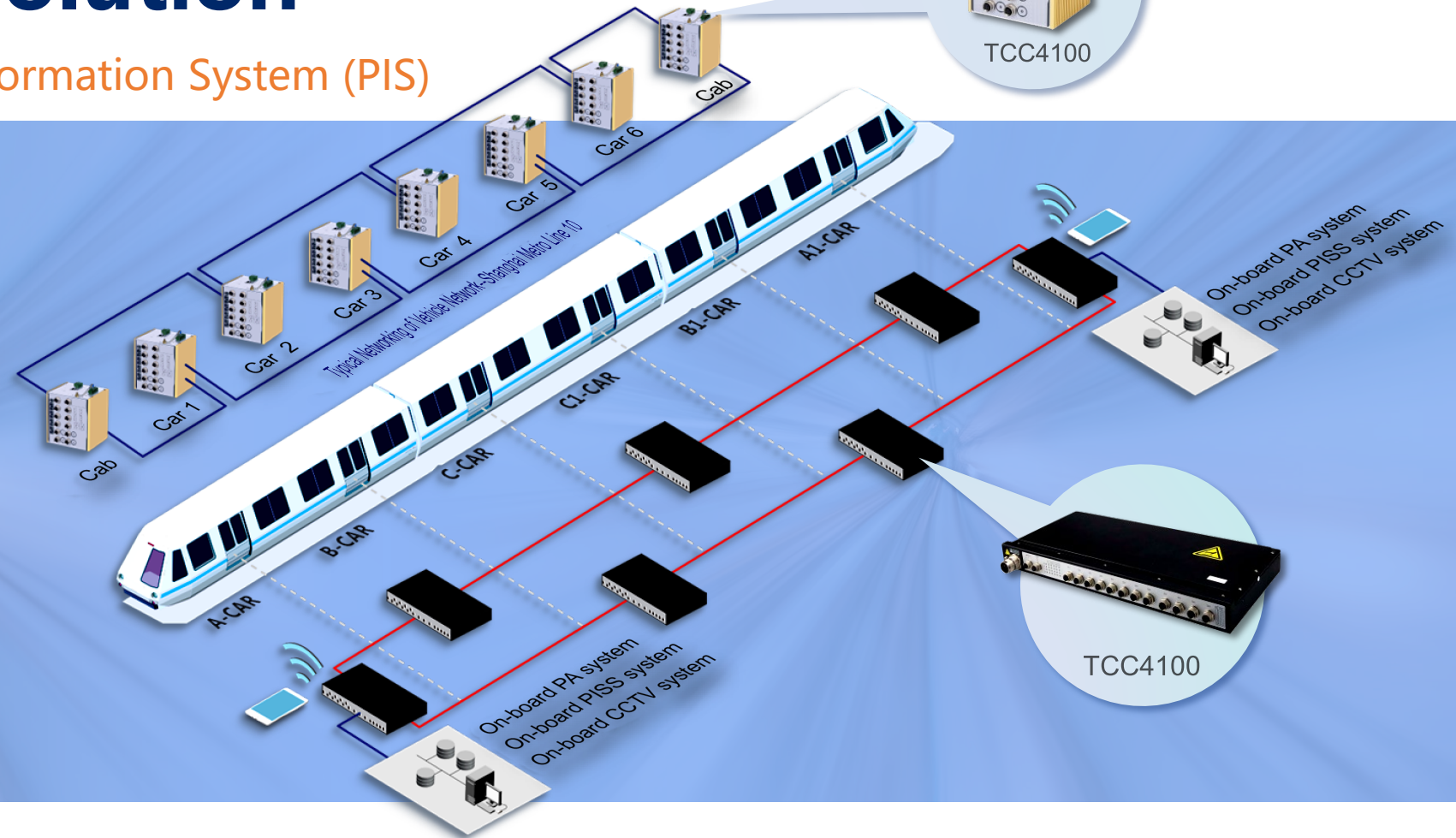
- Comply with EN50155/50121
- Support M12 connector

Power off bypass

- Support Bypass
- Prevent single-point circuit failure

Backbone network ETB

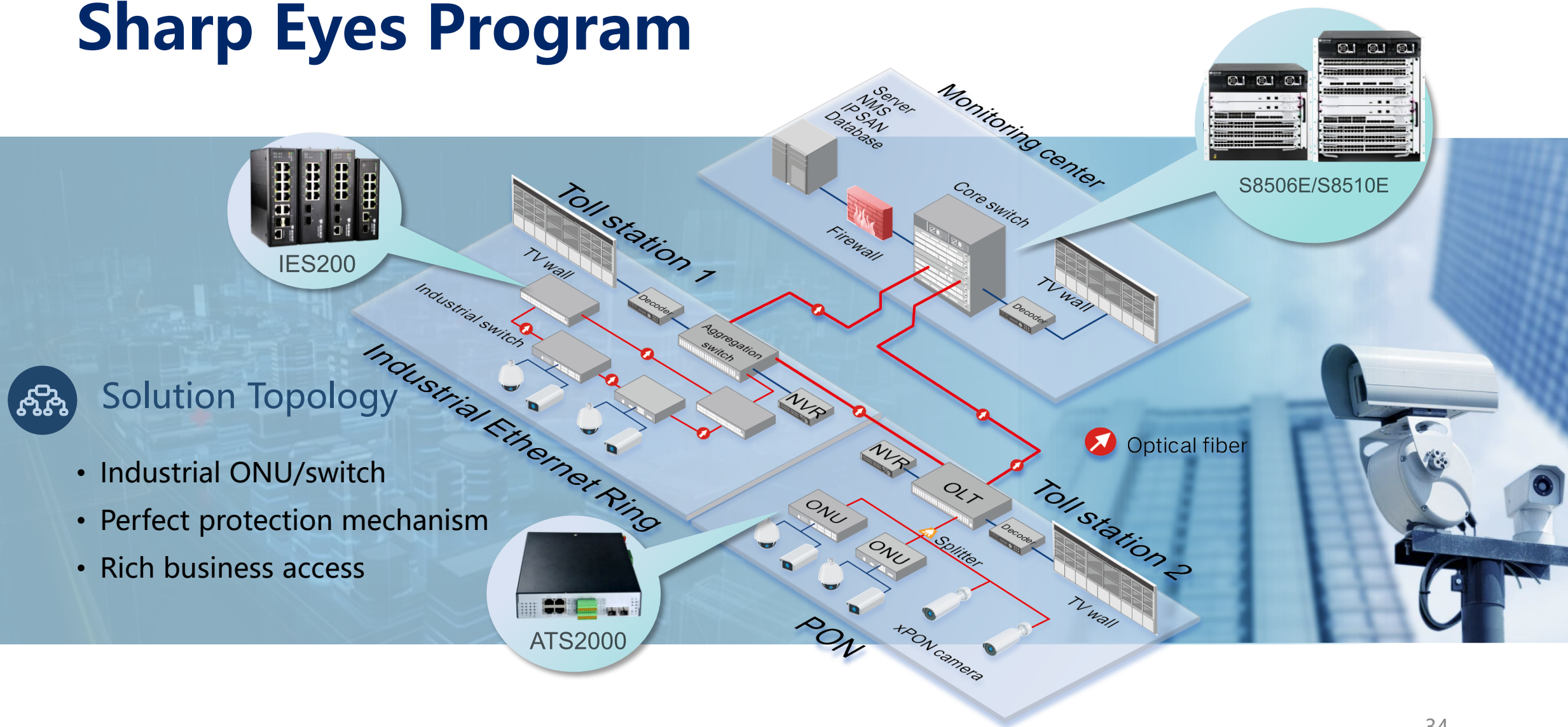
- Comply with IEC61375-2-5
- Dynamic train formation
- Train topology self-discovery during unhooking/joining



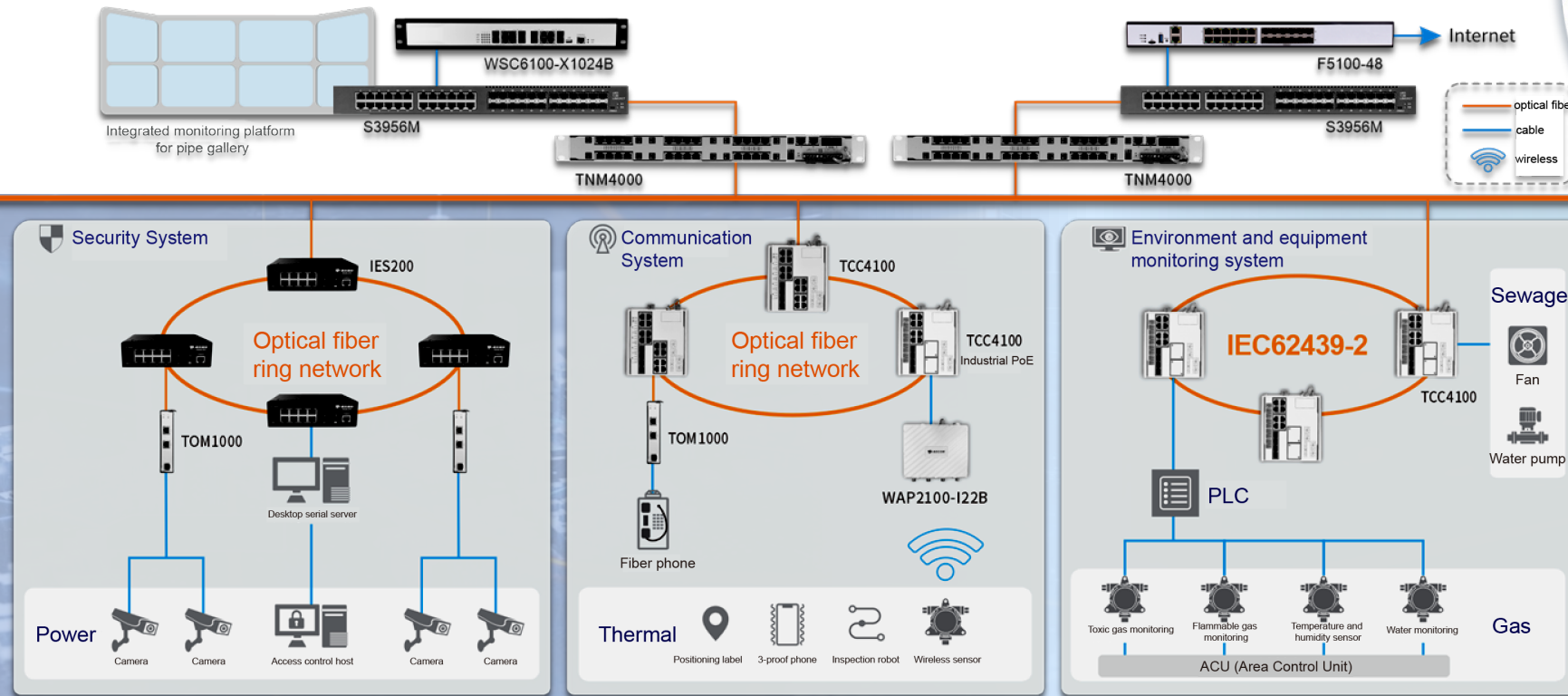
Passenger Information System (PIS)
Automatic Fare Collection System (AFC)


Integrated Supervisory Control System (ISCS)
Information Screening and Delivery System (ISDS)

Sharp Eyes Program



Pipe Gallery Monitoring Solution



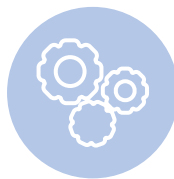
-  Unified management
-  Intelligent inspection
-  Reliable and secure
-  Expandable
-  Easy to maintain

xPON



Products and Solutions

BDCOM has rich xPON product lines,
covering EPON, GPON, 10GEPON,
XG(S)PON (under development).



POL Solutions
FTTH Solutions
Safe City Solutions





P8510



P5916

xPON Series



GP6606-10



GP6606-06

EPON OLT: P8510/P5910

Converged xPON: GP6606-06/-10

- Distributed architecture to meet line speed forwarding.
- Dual MCU and dual power supply redundancy, TypeB/C dual-homing protection, carrier-level reliability.
- Support access and aggregation integration of EPON/GPON/10GE PON/XG(S)PON/GE/10GE to reduce costs.
- Large capacity, high density, support up to 128 EPON/GPON and 64 10GE PON/XG(S)PON.
- Support routing function to achieve dual roles of PON access and core/aggregation.
- Support COP management.



GPON OLT: GP3600 Series

EPON OLT: P3000 Series

10G EPON OLT: P5520

- Support layer-3 routing
- Support 1:1 convergence
- Support COP management
- Support Type-B dual-homing



Full-scene ONU/Accessories

- xPON ONU adaptive EPON/ GPON network.
- Independent R&D of OAM/OMCI to ensure refined management through OLT.
- Support COP management.
- Improve the POL solution through IPPBX, optical splitter.



GP3600



P5520

xPON Series



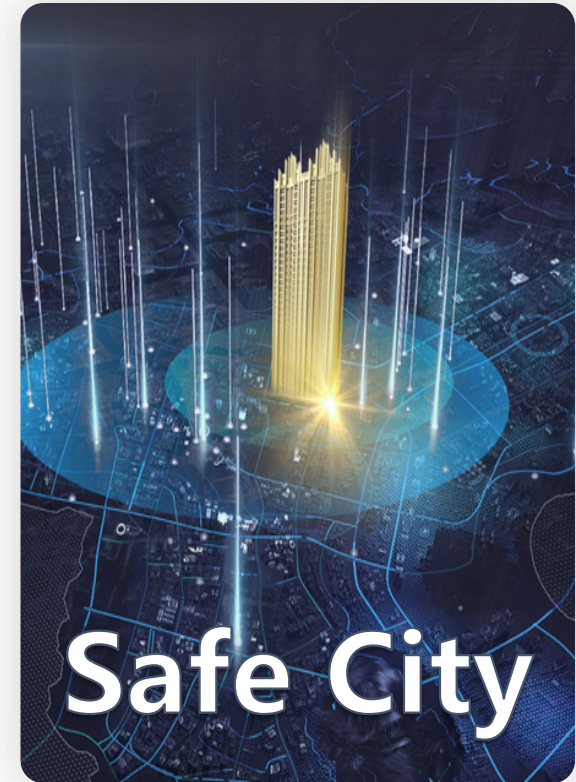
P3000



Full-scene ONU/Accessories



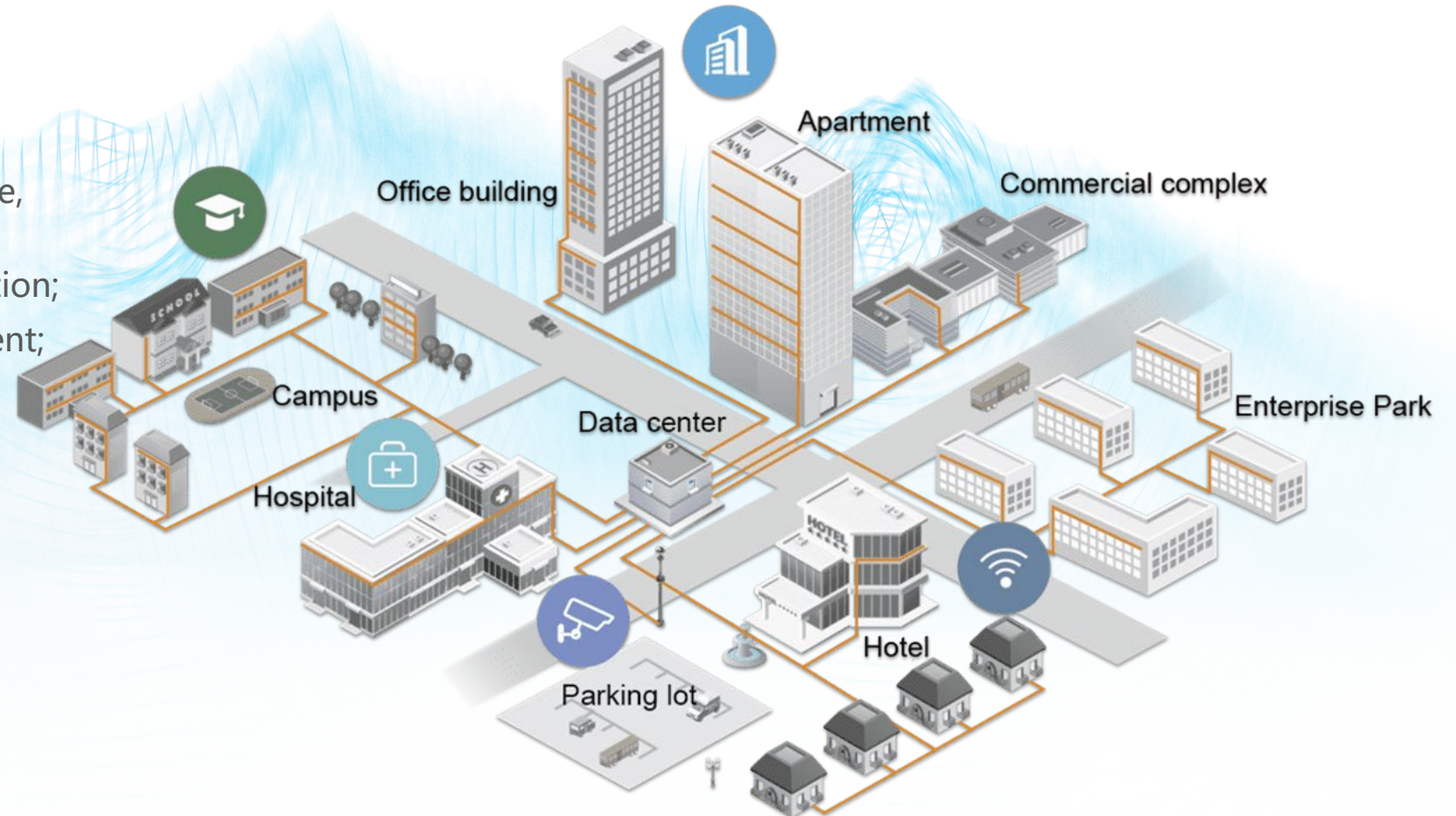
xPON Series Solutions



Passive Optical LAN Solutions

POL Solution:

- Passive ODN occupies small space, which reduces construction investment and energy consumption;
- Simple and convenient deployment;
- Few failure points, to facilitate maintenance and management;
- Multi-service integration;
- Unified management;
- Smooth upgrade to 10G, 40G;
- Reduced overall cost .



Passive Optical LAN Solutions

8 Advantages of BDCOM POL

From design to O&M

Simple networking |||

Simple design, layer-2 networking,
multi-network convergence

Easy deployment |||

Easy construction,
easy debugging

Light operation |||

Few faults, APP management,
configuration delivery

Intensive security |||

Communication encryption,
resistance of the electromagnetic
interference, refusal of illegal access



From traditional solution to POL

Low cost |||

Total cost reduced by **60%**

High bandwidth |||

Downlink **1.25G/2.5G**

Wide coverage |||

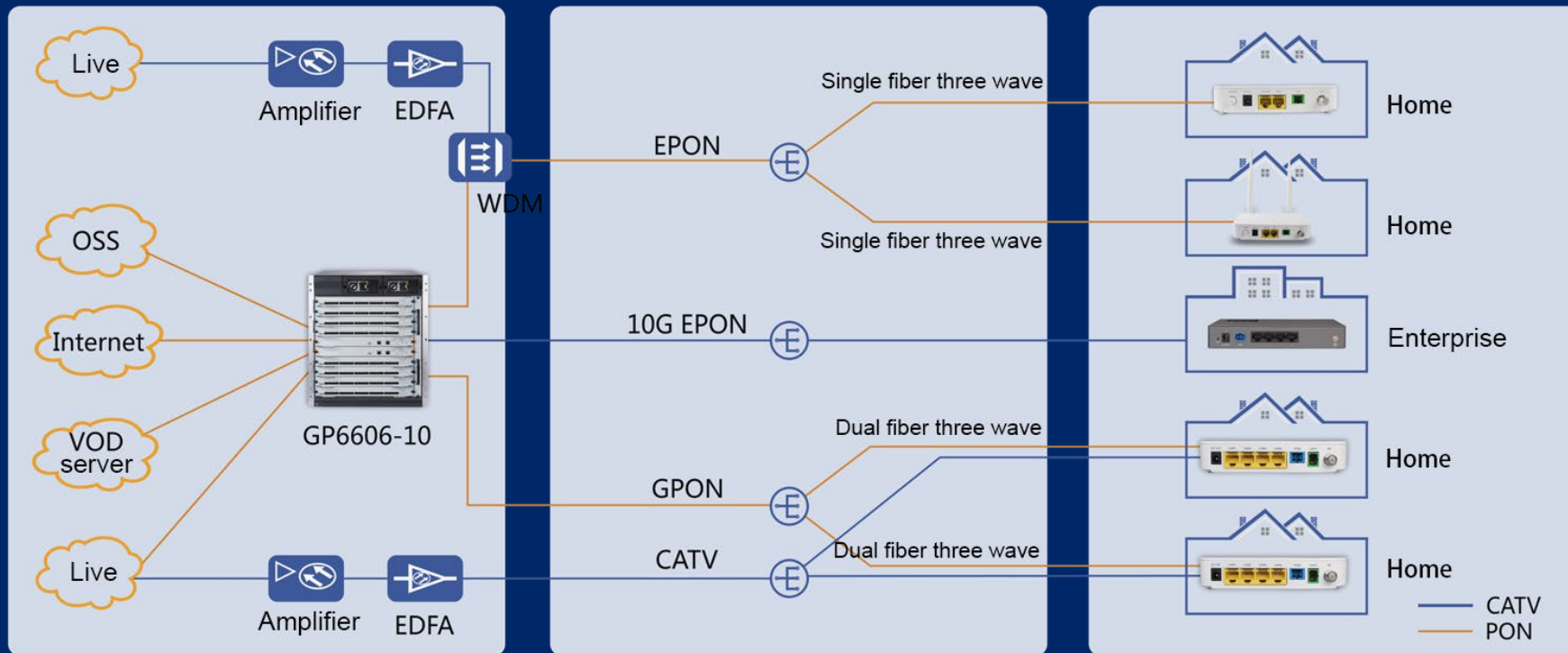
Cover a radius of **20km**

Steady upgrade |||

Steady upgrade to **10G, 40G**

FTTH Solutions

Support Ultra HD Gigabit access



Smooth evolution

- ✓ Sharing platform of EPON, GPON, 10GEPON, XG(S) PON
- ✓ Support 4K HD devices

Service quality assurance

- ✓ Large bandwidth, support multi-service IP
- ✓ Dual fiber three wave, single fiber three wave, IPTV terminal
- ✓ Support QoS to guarantee important services

Safe City Solutions

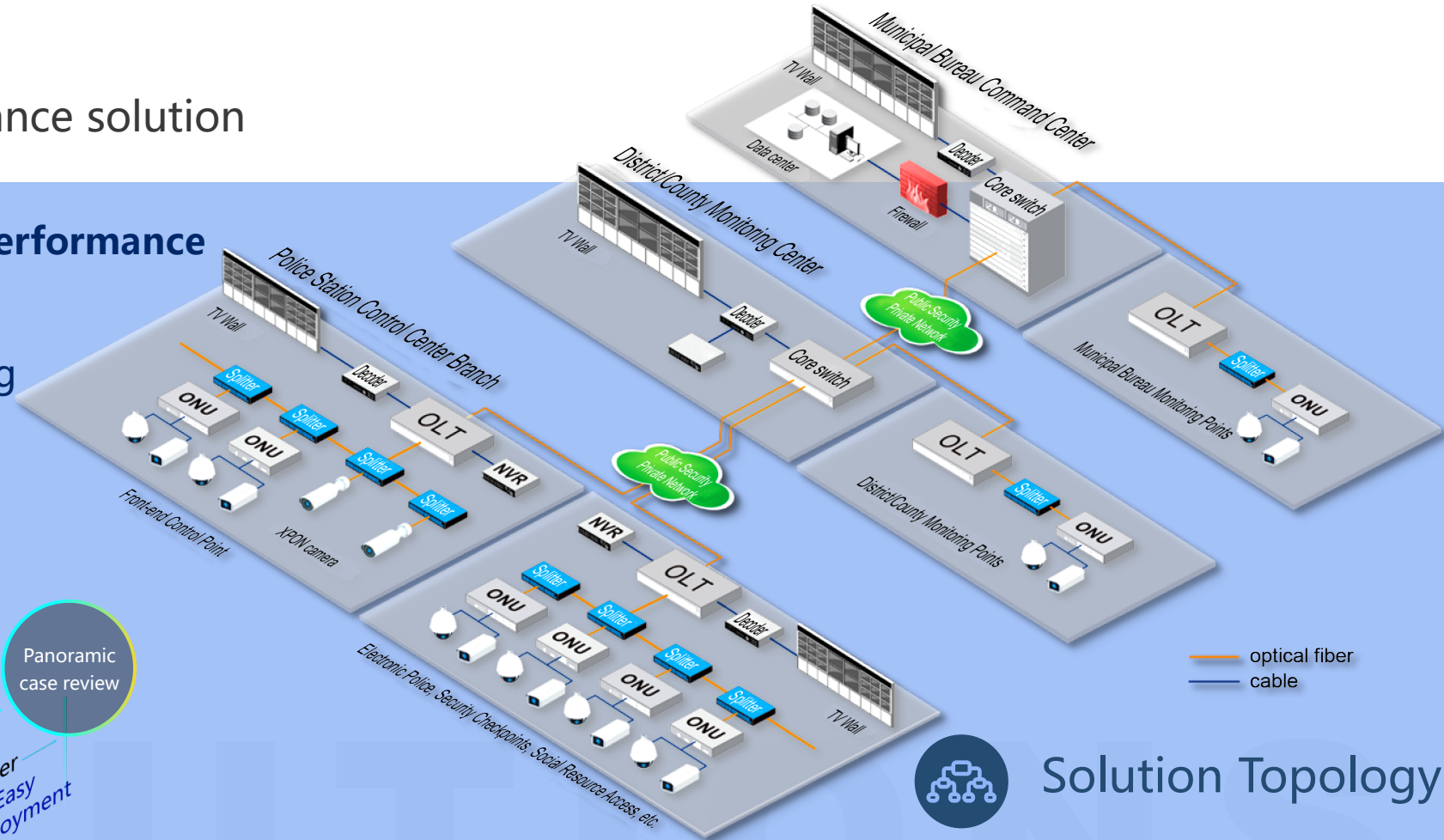
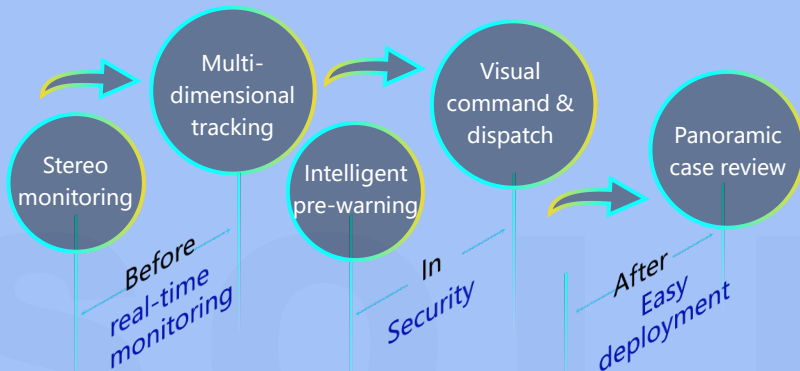
PON-based video surveillance solution

Effectively built up a high-performance monitoring network:

Refined monitoring & tracking

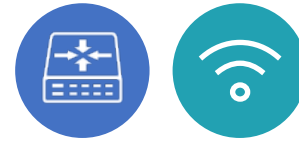
Intelligent pre-warning

Precise positioning & striking



Solution Topology

Router & Wireless



BDCOM Commercialized Router: No. 001
Access Certificate of MIIT, vendor partner of
Chinese Operators, multi-service supported



◎Router series ◎BIG Converged Gateway

Provide users with full-scene, high-quality
wireless solutions.



◎WAP series ◎Wireless AC Series





Multi-service Router

- Multi-service supported
- IPv4/v6 dual stack
- Operator's centralized procurement specifications
- WAN modules such as serial port, E1, POS.



Routing & Switching Integrated Machine

- Multiple functions in one device, saving money.
- Full-featured switching capability, powerful .
- Few failure point, saving energy.
- Simple operation and maintenance, saving time.



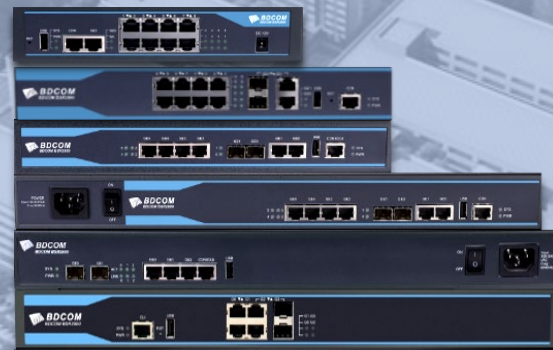
4G/5G Router

- Extended operating temperature, and anti-thunder
- 4G and 5G network access capabilities
- APN private network, VPN encryption, safe and reliable
- Centralized management in the cloud



Industrial Router

- Full-featured routing protocol stack
- Integrated routing and switching
- High-precision synchronous clock
- Industrial extended temperature: -20°C~70°C



Multi-service Router



Routing and Switching Integrated Machine

Router series



4G/5G Router



Industrial Router

BIG Converged Gateway

BIG2000 Series



New ARM architecture CPU



BDROS evolution, Linux localization platform



Integration of routing, switching, wireless AC, authentication, security



LCD color screen + COP management

Wireless AP Series



Ceiling-mounted Wireless AP

- WiFi5/WiFi6 chip solutions
- High-density wireless coverage
- Stable connection
- Fully automatic seamless roamin



Wall-in Wireless AP

- Optimized antenna design
- Switchable LED
- Energy-saving



Outdoor Wireless AP

- High power and wide coverage
- Various antenna accessories
- Waterproof, dustproof, anti-thunder
- Built-in smart antenna

Wireless AC Series

Flexible network deployment

Unaware mobile roaming experience



Integration of routing, AC and authentication

Easy-to-use cloud management and O&M



COP

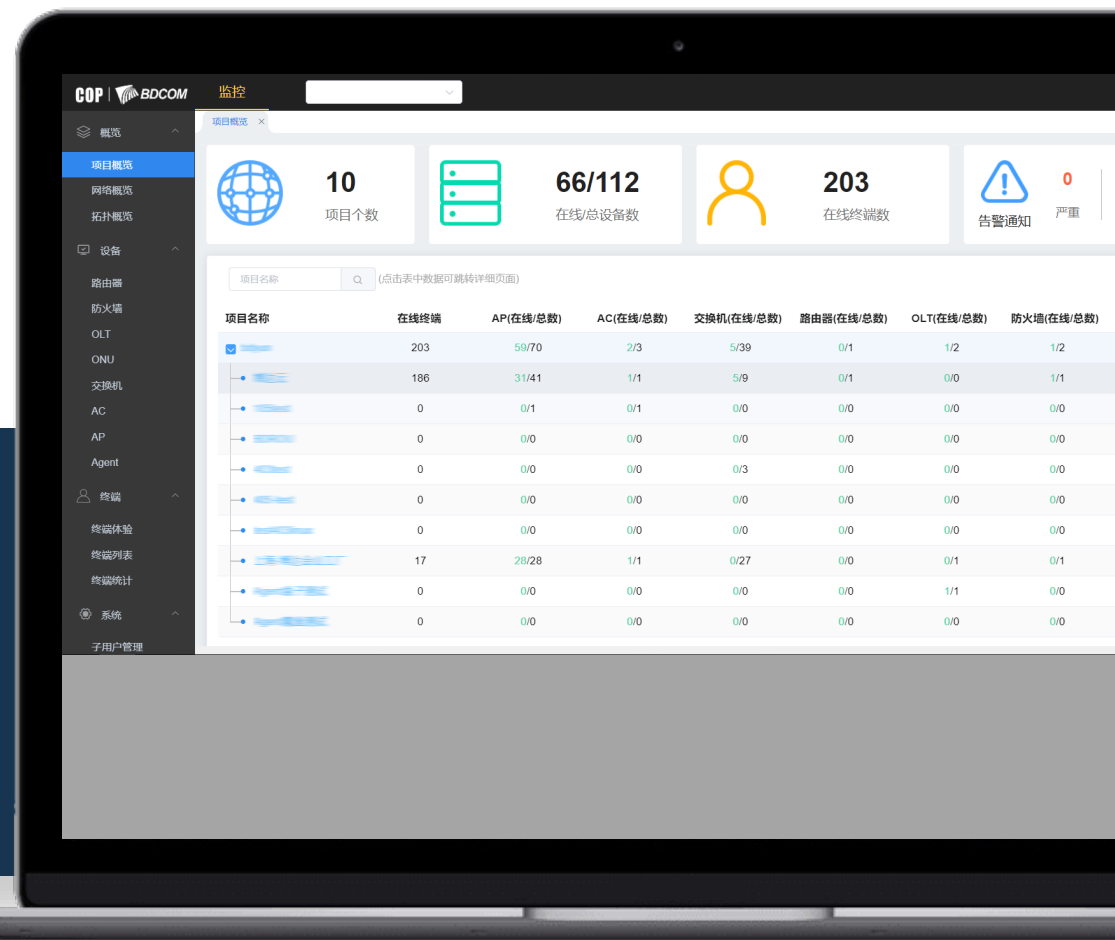


Cloud-based Operating Platform

Aim to O&M, but not only O&M



- Unified management of six product lines.
- Asset management, network operation and maintenance, operation alarms, all done in one browser.
- Intimate WeChat Mini Program, to manage anytime and anywhere.
- Display professional protocols through intuitive reports, easy to use.



Cloud-based Operating Platform

All you need is a browser.



Visualization of user traffic and business



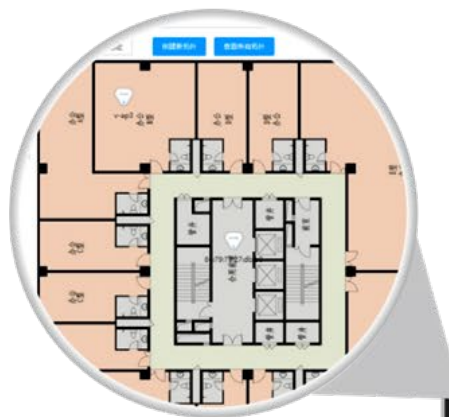
Web logs
and alerts

Network topology
and asset management

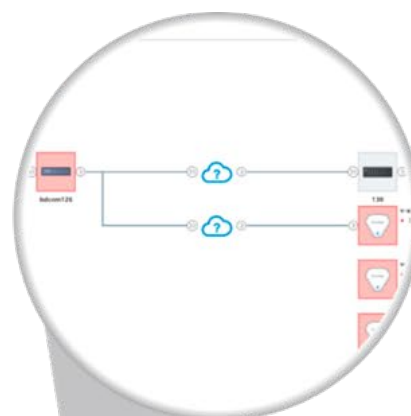
Hierarchical user and
project management



Cloud-based Operating Platform



Practical topology
of device position



One page display
of network health



03 Part

Applications

With over 20-year technology precipitation and a strong marketing team, BDCOM can meets diverse customer needs.



Electricity



CATV



Rail transit



Estate



Education



POL



Medical



Pipe rack



Security



Government



Hotel



Financial

Service Provider

20000000
units running lively

100+
Countries



Partners >>

- Reliance
- Rostelecom
- Beeline
- CAT
- TOT
- ETB
- 3BB
- Planetcable
- Welink
- Link3
- TIS
- Aamra
- LG U+
- KT
- AIS
- BracNet
- Viettel
- Broadlink
- MTS
- Megfon
- Singtel
- COL
- Telkom
- Herotel
- Hyundai Telecom
- Globe telecom
- Fiberstar



Enterprise Network



Financial

Mumbai Stock Exchange
Singapore DBS Bank
Central Bank of Myanmar
Russia Sberbank
Russia Tax Bureau

Hospitality

Indonesia JHL 5 star Hotel
Indonesia Bandung Surveillance
Vietnam Novotel 4-star hotel
Dhaka Sarina 4-star Hotel

Education

Singapore Ministry of Education
Busan Ministry of Education
University of Dhaka
Bangladesh CUET
Bangladesh BGB Public school
India National Universities

Transportation

New Delhi Metro Station
India West Zone Railway
Incheon International Airport
Bangladesh Saidpur Railway station

Energy

Indonesia PLN group
Philippine NGCP
France Power Grid
Korea Power Grid
Vietnam South of Power

Public Service

Singapore Police Force
Philippine Nueva Ecija
Philippine Luneta Park
Bangladesh Police
Russia Administration Ministry
Singapore Poly Clinic

🔗 One-stop solution covering multiple lines & levels

⚙️ Strong capacity of R&D and Manufacturing

🏠 Rich experience serving Partners & Customers

Shanghai Baud Data Communication Co., Ltd.



Thank You